



MEDICAL EMERGENCIES #1

26/06/2013

Herman Tam

hht108@ic.ac.uk

FY1

Outline

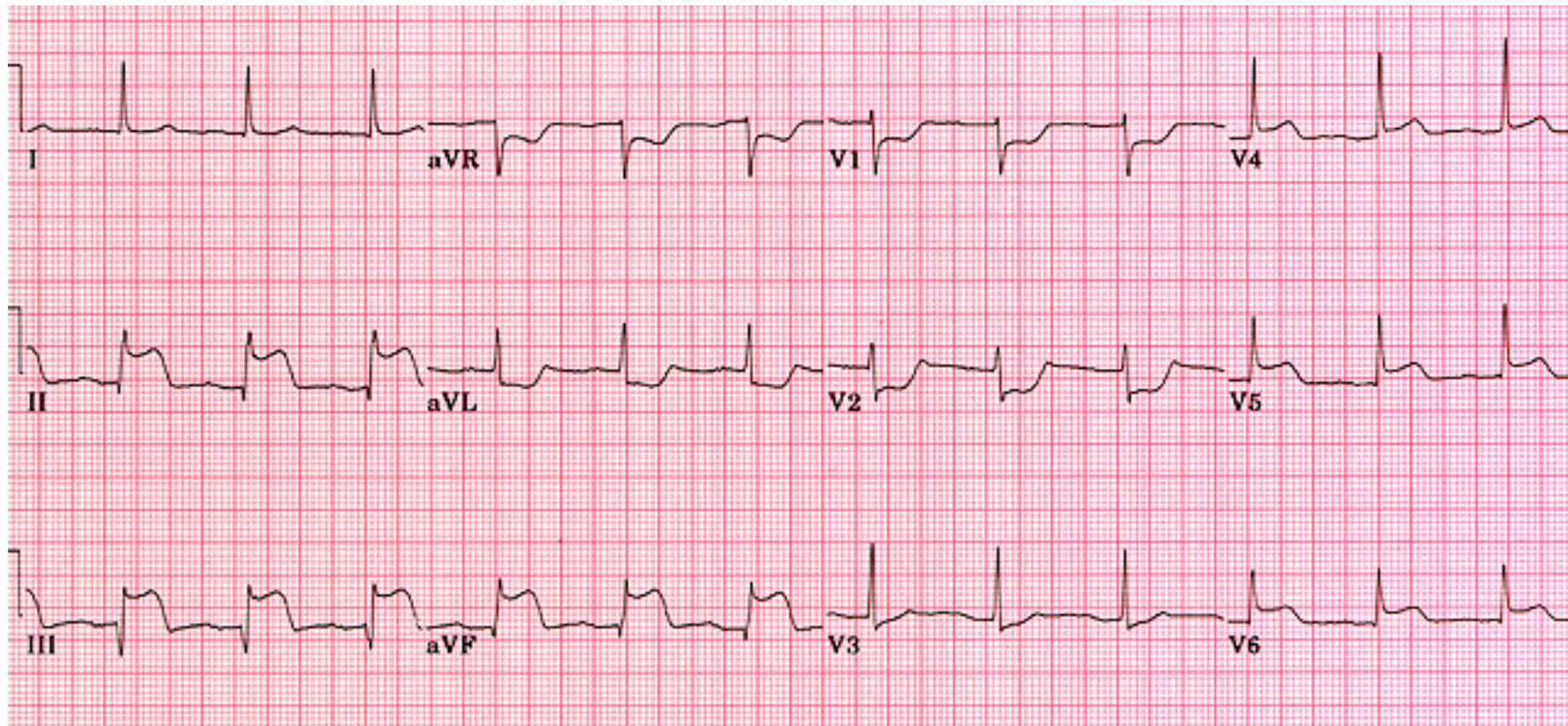
- Scenario - 10 minutes
- Analysis

Scenario

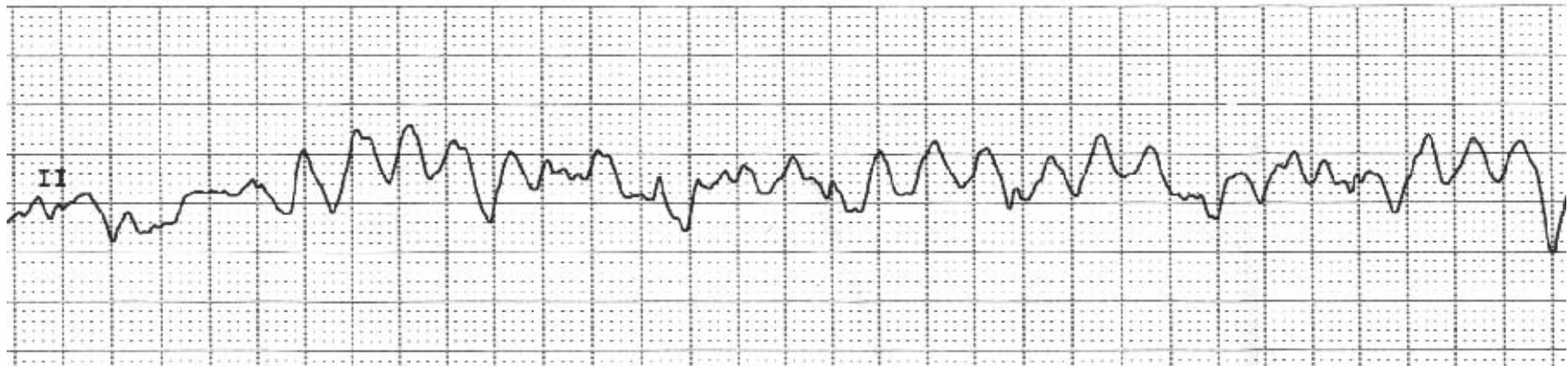
- 4 volunteers
 - 2 attend scenario substitute at 5 minutes
 - 2 to write drug charts, investigation requests
 - Purposeful observations

- “You’re the on-call medical FY1 and your bleep goes off at 0300.

ECG 1



ECG2



ABG

□ pH	7.35	□ Na	137
□ pO ₂	10	□ K	6.8
□ pCO ₂	5.5	□ Cl	100
□ HCO ₃	20	□ Glu	8.5
□ BE	-2.0	□ Lac	2.0

Well done!



Learning Objectives

- To assess the patient with ACS using a focused approach
- To initiate immediate ACS treatment
- To recognise cardiopulmonary arrest and put out arrest calls
- To appreciate the FY1 role in arrest call

Focused approach to ACS

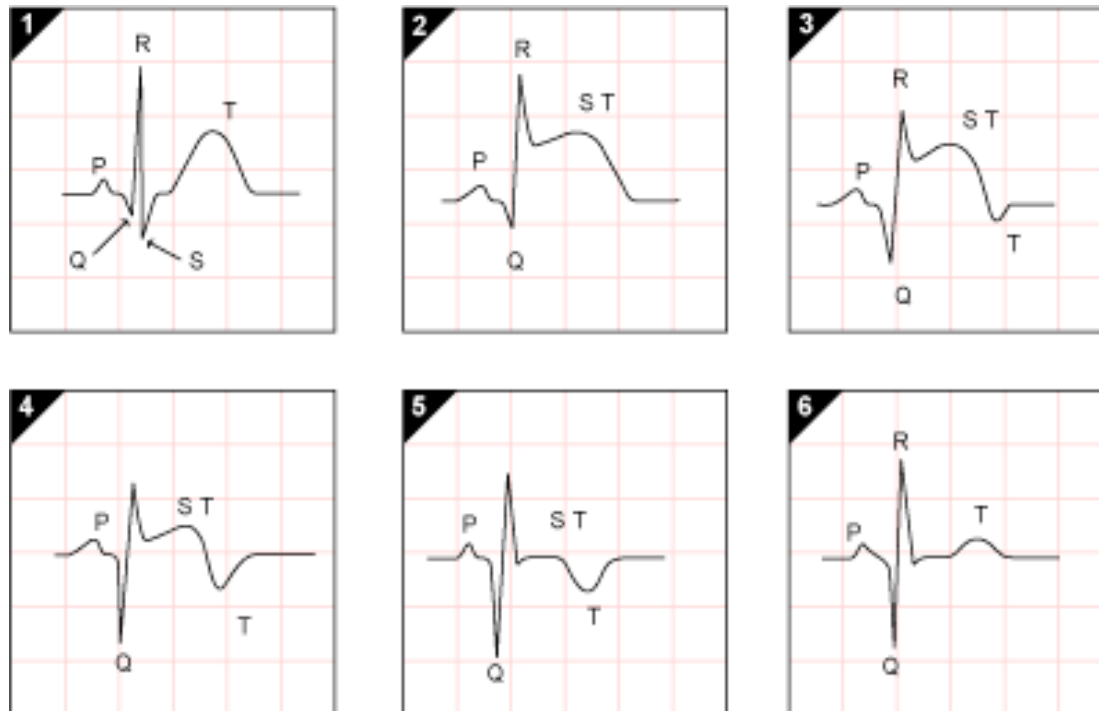
- Before you see the patient
 - Obs
 - ECG
 - GTN if on DH
 - Notes

Focused approach to ACS

- With the patient
 - ABCDE
 - Obs
 - Analgesia
 - Brief history
 - Pain history
 - RFs
 - PMH
 - Focused exam
 - pale, sweaty
 - Cardiovascular system

Ix - ECGs

- Serial ECGs
- Previous ECGs
- Cardiac Monitoring



Ix - Bloods

- FBCs
- U&Es
- Troponin
- Repeat Troponin (1 2hr)

ACS Diagnosis

- 2 of 3:
 - History
 - ECG
 - Troponin

- May have to treat before Troponin levels are back

ACS Treatment

- Aspirin 300mg stat
- Clopidogrel 300mg stat
- S/C LWMH
- Oxygen
- IV Morphine 5mg stat
- IV Metoclopramide 5mg stat

- STEMI - consider PCI or Thrombolysis
 - Refer to closest Cath lab

Recognizing cardiopulmonary arrest

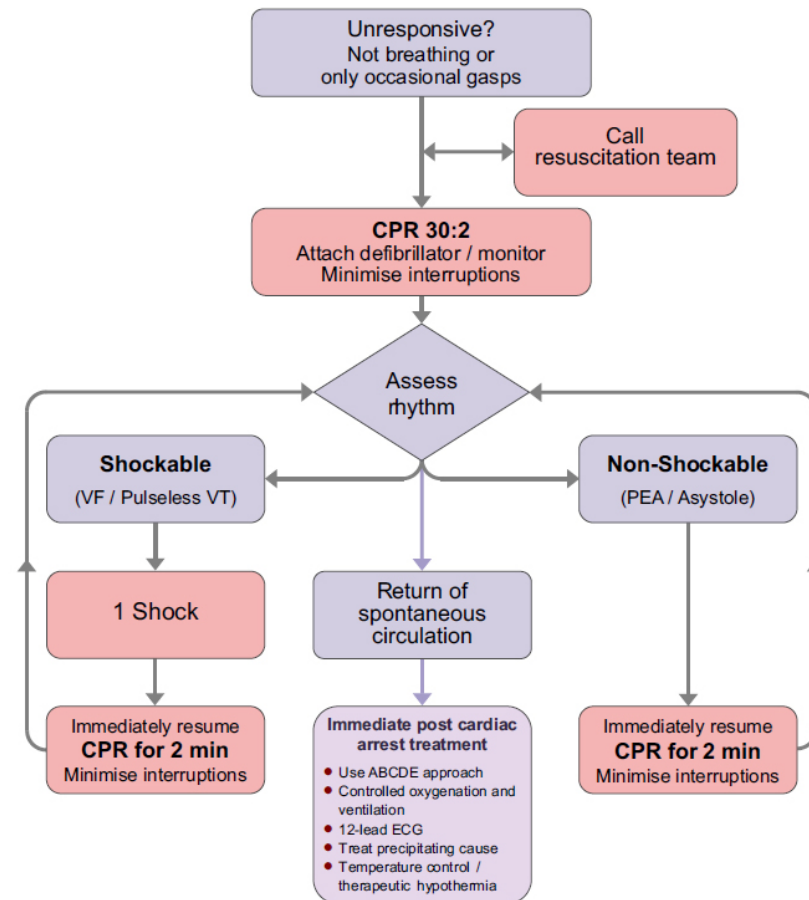
- Most in-hospital cardiac arrests have warning signs and symptoms
- Some preventable early recognition and treatment
- ABCDE approach to assess and treat critically ill patient
- 2222 arrest call!
 - ▣ location, type of call, resus trolley

Role of FY1 in arrest calls

□ Usually supportive unless alone

- Compressions
- Vascular access
- ABGs
- Post-resuscitation care
 - Order Ix (bloods, CXRs)
 - Old notes
 - Explain to family

□ Follow ALS algorithm



Summary

- Focused management of ACS
 - ▣ practical FY1 tips

- Recognise cardiopulmonary arrest and call for help
 - ▣ 2222
 - ▣ Compressions
 - ▣ Follow ALS algorithm (get on course early!)

Questions?

