

# Case I

# History I

- 70-year old qatari male, December 2007
  - 2 months history of thrombocytopenia, associated with back pain and difficulties in walking

## Investigated in Qatar 11/2007:

- Blood film showed a leukoerythroblastic anaemia with 4% blasts and pancytopenia
- Bone marrow aspirate and trephine showed marked fibrosis, infiltration with abnormal cells noted

# History II

- CT of chest, abdomen and pelvis:  
Pulmonary emphysema and bilateral adrenal masses
- Bone scan:  
focal uptake in ribs and femora
- Adrenal biopsy: showed possible carcinoma
- Unable to make further diagnosis in Qatar
- Rapid deterioration of the patient

# Examination I

- Transfer to London on the 30/11/2007 for further investigation and diagnosis:
  - On arrival:
    - Bedbound, in pain
    - Pale, jaundiced
    - Apyrexial
    - Multiple subcutaneous hard nodules across the anterior chest wall
    - Abdominal examination reveals enlarged liver
    - Neurological examination shows a 4/5 weakness of the R hip flexors only

# Investigation I

- **FBC** (there is a discrepancy between the machine and manual differential count)
- **Flowcytometry**
- **Blood film**
- **Bone marrow aspirate & trephine**  
(H&E, DE, SBB, and Immunohistochemistry)
- **Skin biopsy**  
(H&E and Immunohistochemistry)
- **What is the likely diagnosis?**

# Full Blood Count

Date of Birth: 01/01/1936
Sex: M
Laboratory Number: 07H294852
Specimen Received: 07/12/07 at 12:21
Ref. Lab. Details:

Test Name	Results	Units	Reference Range
-----------	---------	-------	-----------------

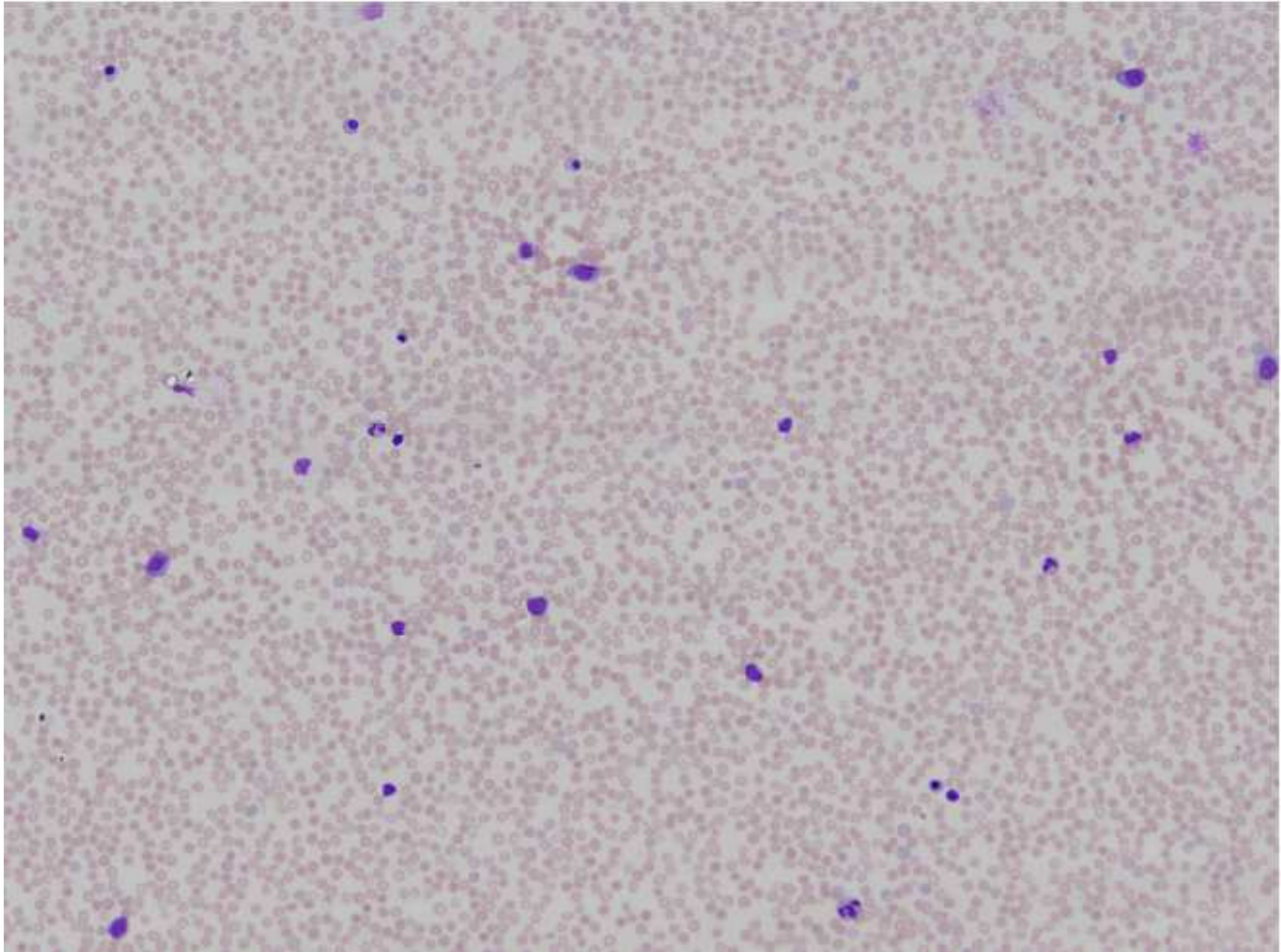
## FULL BLOOD COUNT

Hb	9.4	L	g/dL	11.5-17.0
WBC	11.06	H	10 <sup>9</sup> /L	3.5-11
Platelets	27	L	10 <sup>9</sup> /L	140-400
RBC	3.62	L	10 <sup>12</sup> /L	3.9-5.6
HCT	0.299	L	L/L	0.35-0.47
MCV	82.5		fL	80-98
MCH	26.1	L	pg	27-33
MCHC	31.6		g/dL	31-37
Neutrophils	4.87		10 <sup>9</sup> /L	1.7-8.0
Lymphocytes	4.20	H	10 <sup>9</sup> /L	1.0-3.5
Monocytes	0.00	L	10 <sup>9</sup> /L	0.1-1.0
Eosinophils	0.00		10 <sup>9</sup> /L	0.0-0.46
Basophils	0.00		10 <sup>9</sup> /L	0.00-0.20
Blast cells	0.44		10 <sup>9</sup> /L	
Promyelocytes	1.11		10 <sup>9</sup> /L	
Myelocytes	0.00		10 <sup>9</sup> /L	
Metamyelocytes	0.44		10 <sup>9</sup> /L	
Nucleated RBC	28			

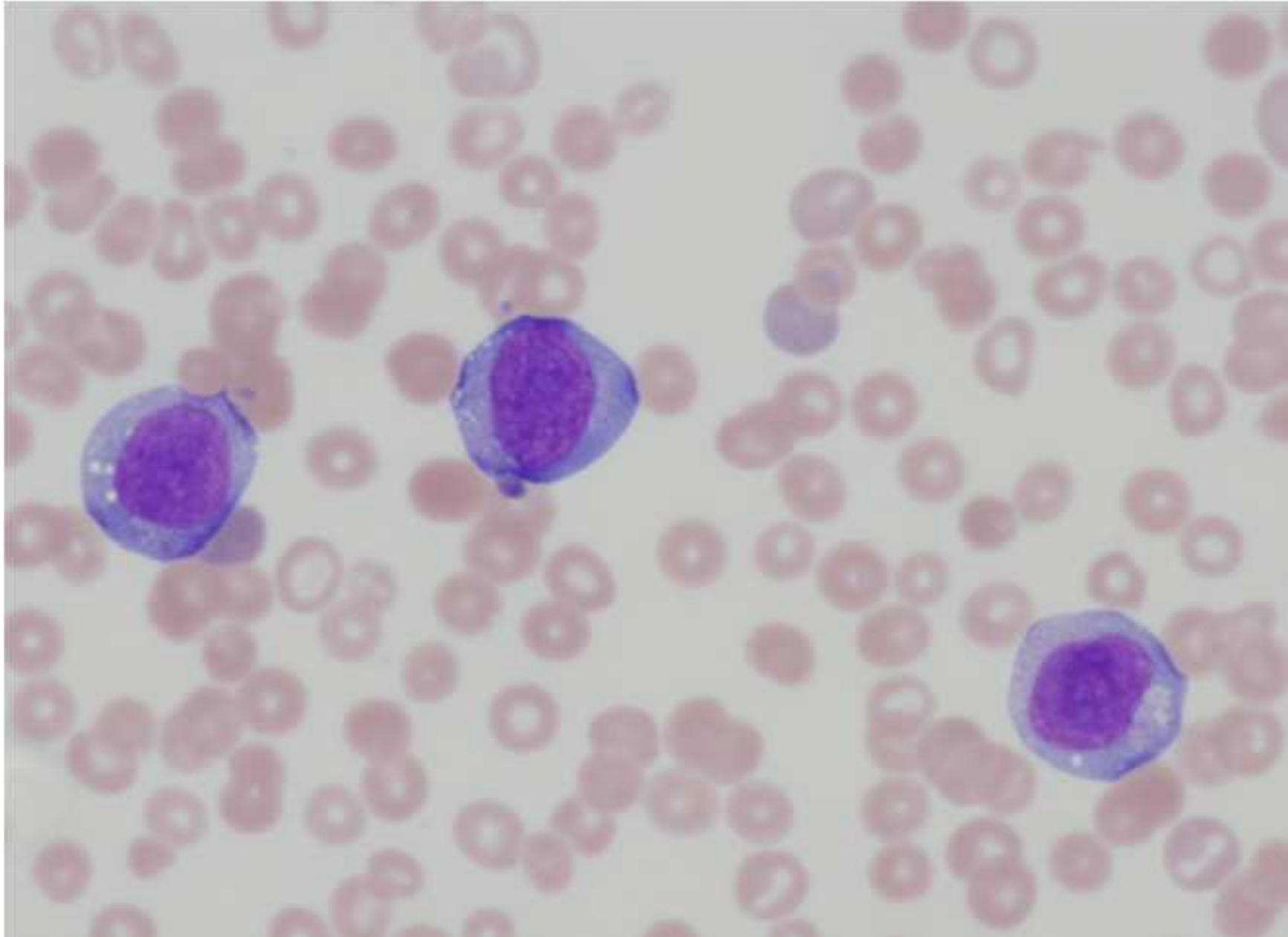
### Film Report

Manual differential reported. Anisocytosis  
Dimorphic population, Polychromasia +++,  
Thrombocytopenia confirmed on film.

# Blood Film I

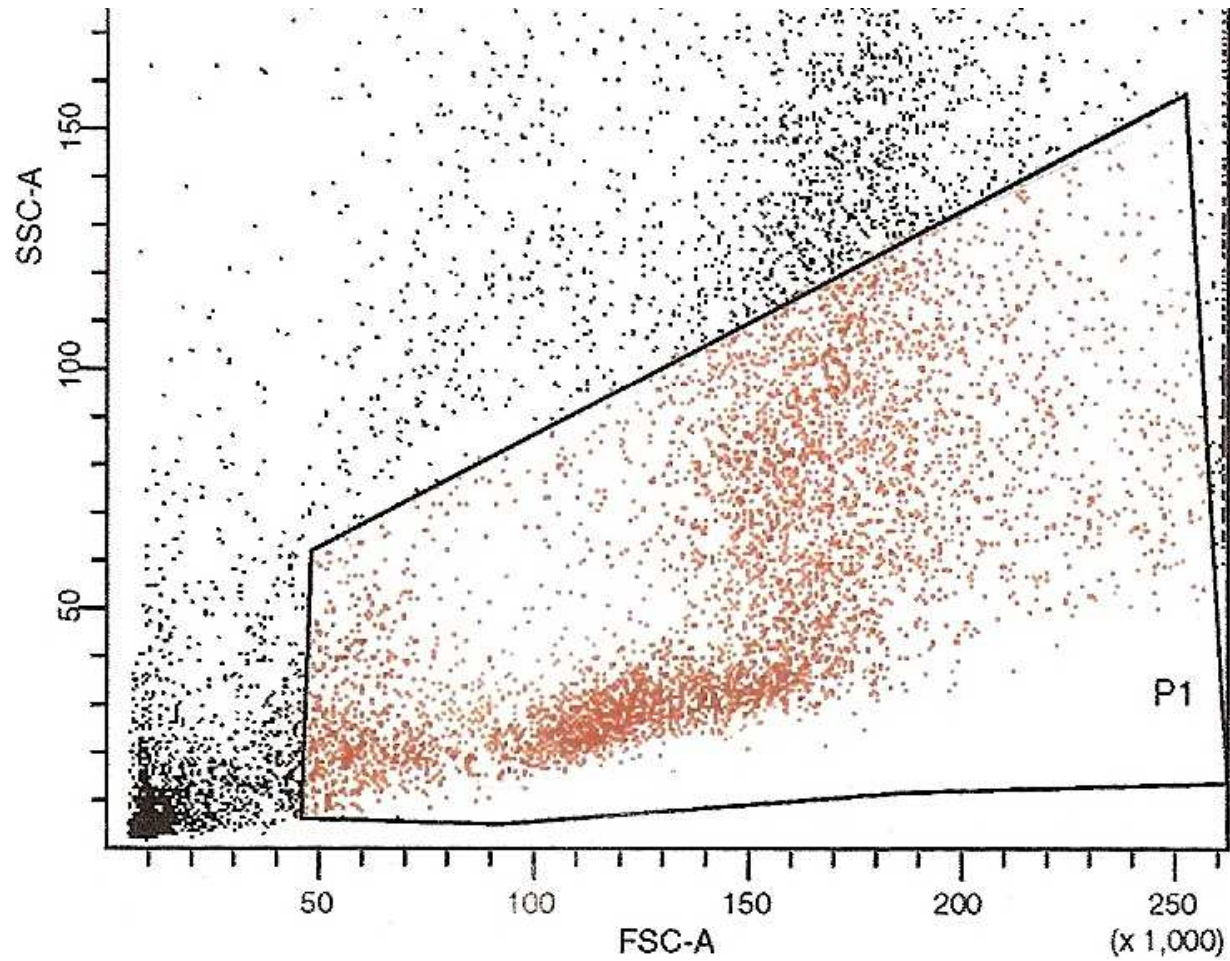


# Blood Film III





# Scattergram I



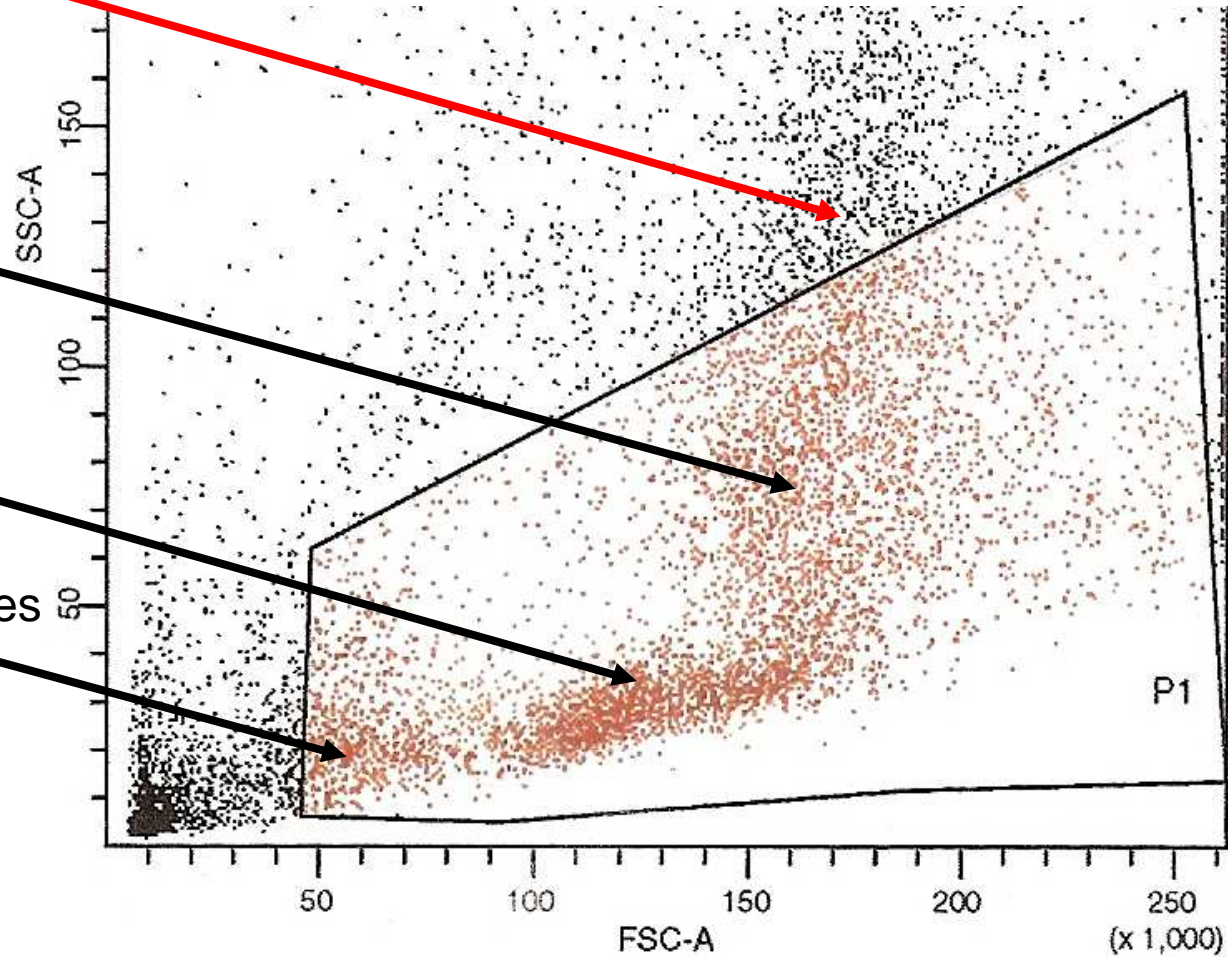
# Scattergram I

Neutrophils

Myelocytes

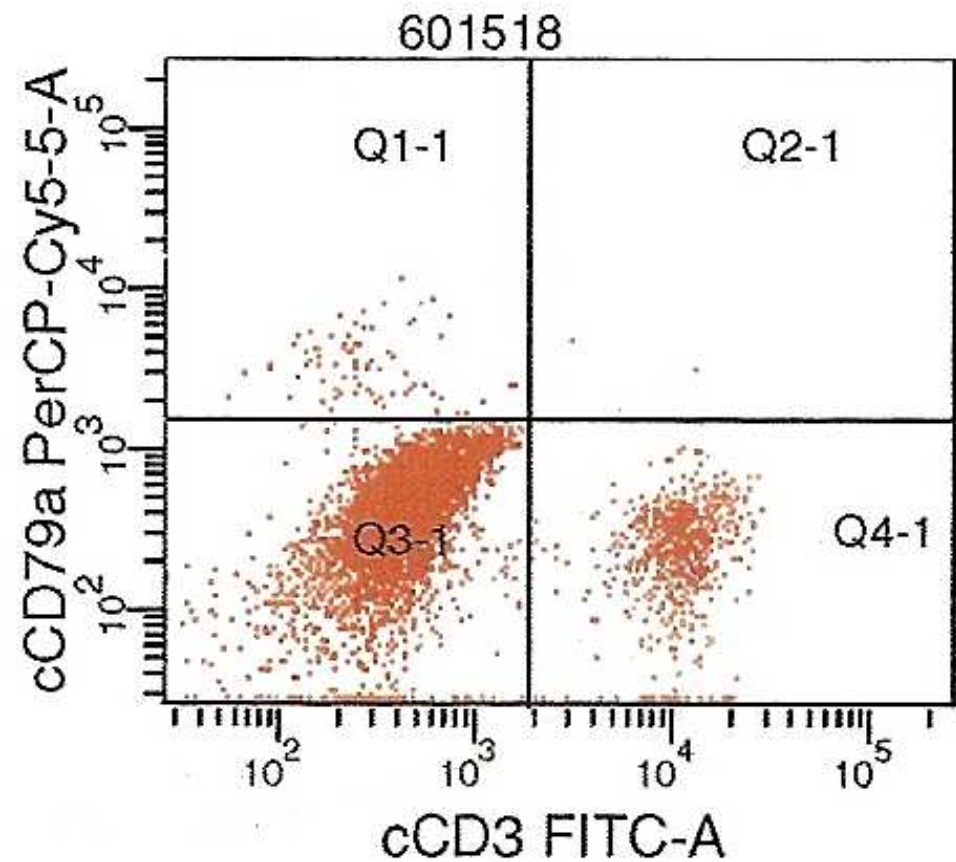
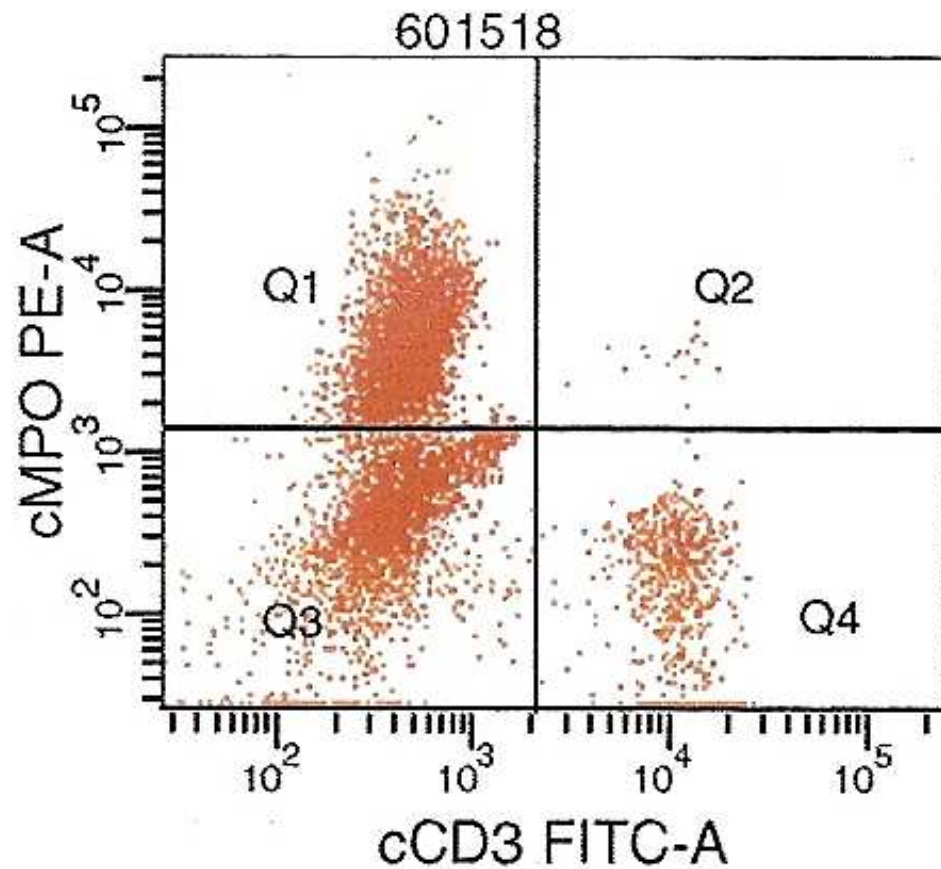
Blasts

Lymphocytes



# Differentiation myeloid-lymphoid

## MPO/CD3 – CD79a/CD3

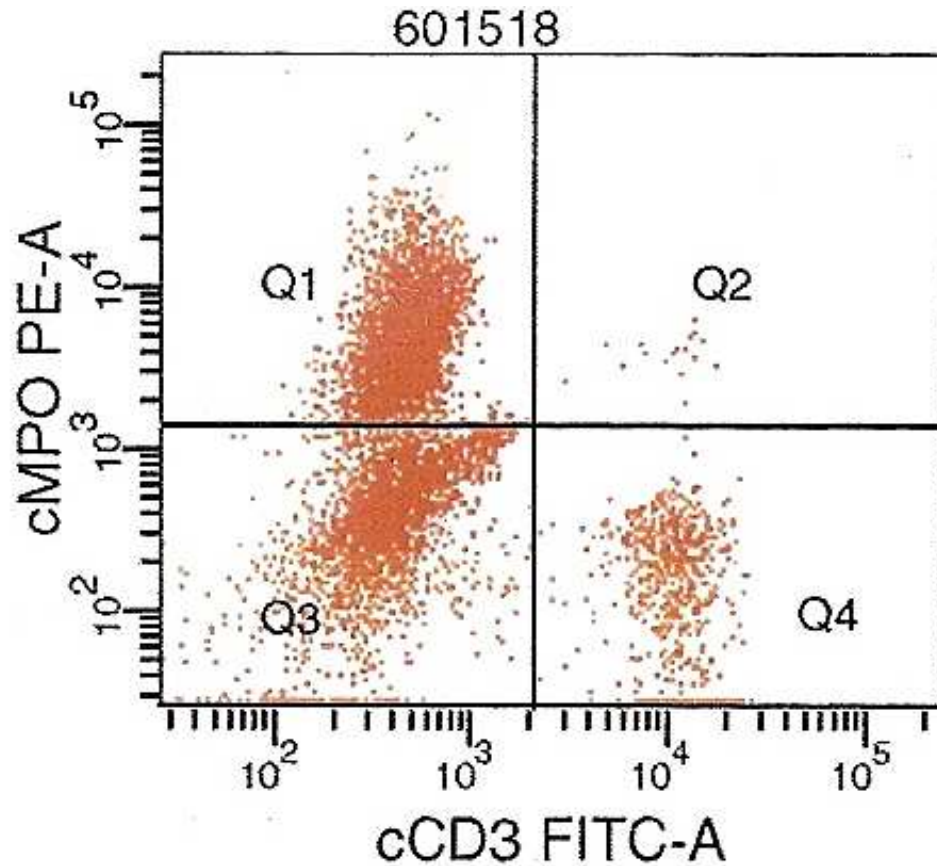


# Differentiation myeloid-lymphoid

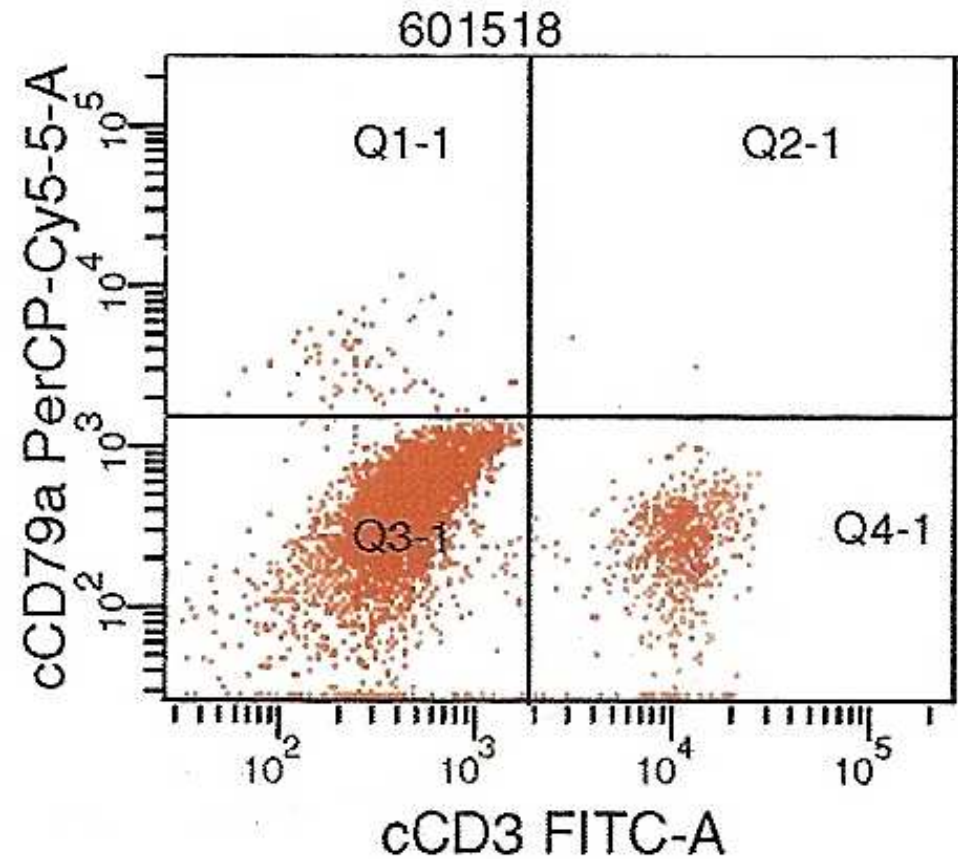
## MPO/CD3 – CD79a/CD3

Myeloperoxidase

CD3 stains normal T-Lymphocytes



Distinct MPO negative population



Negative for lymphoid markers  
CD79a and CD3

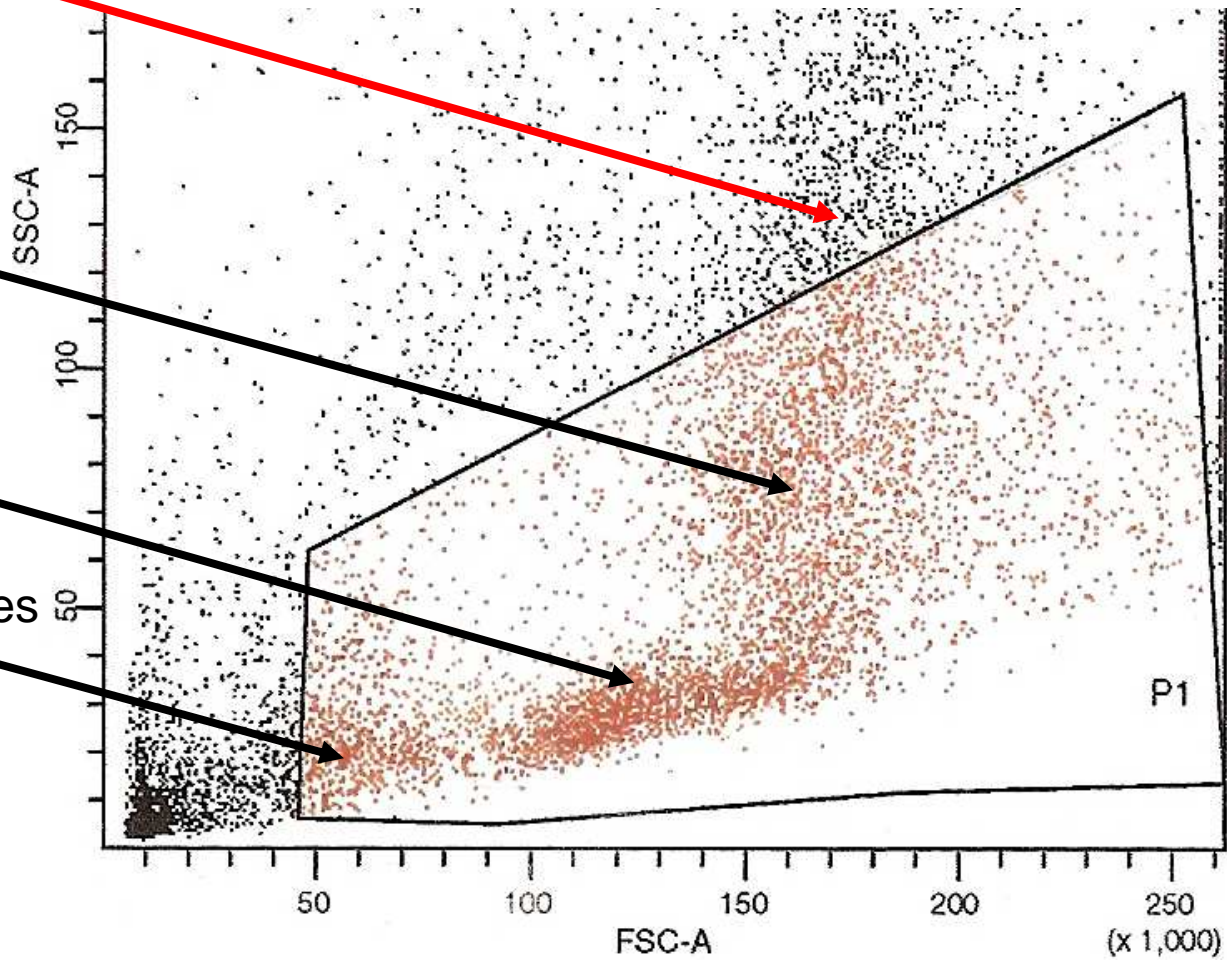
# Scattergram I

Neutrophils

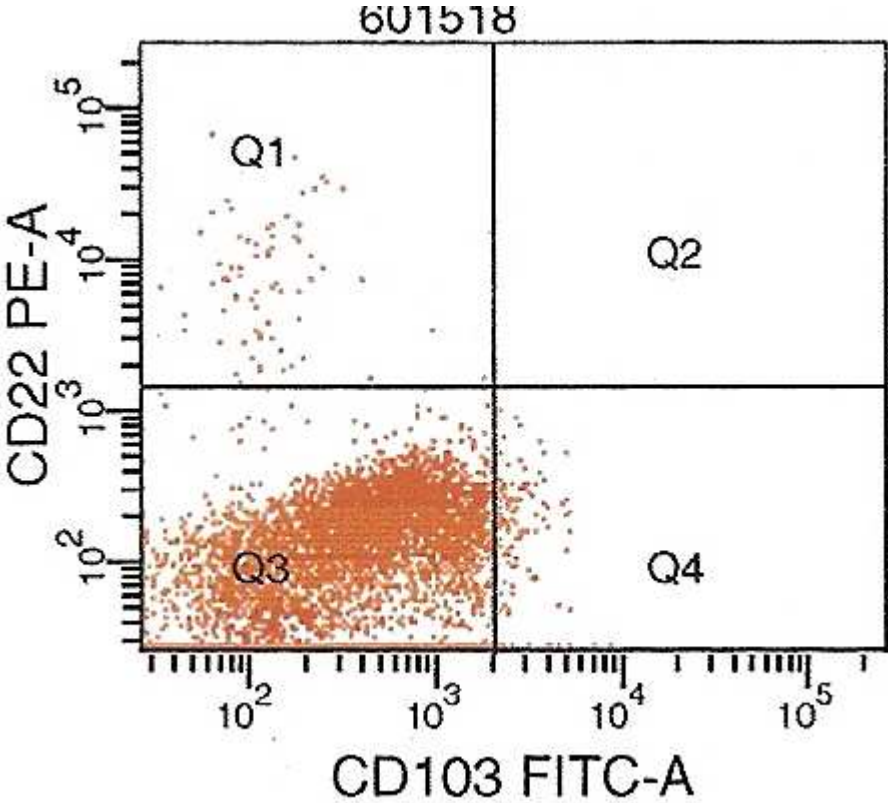
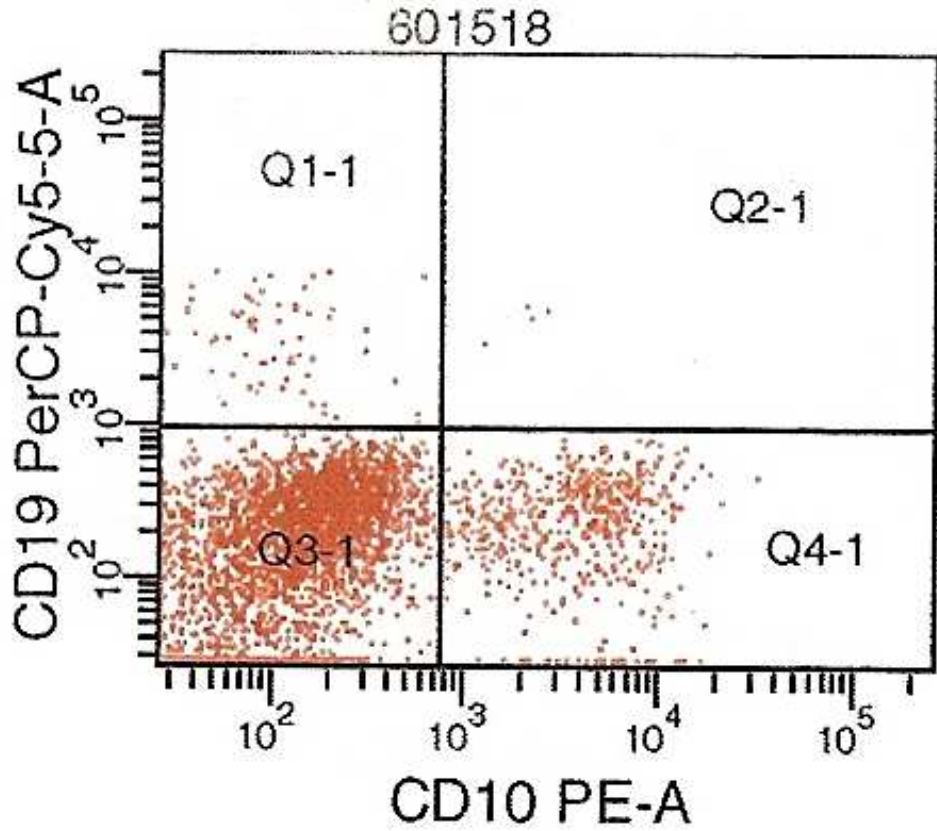
Myelocytes

Blasts

Lymphocytes



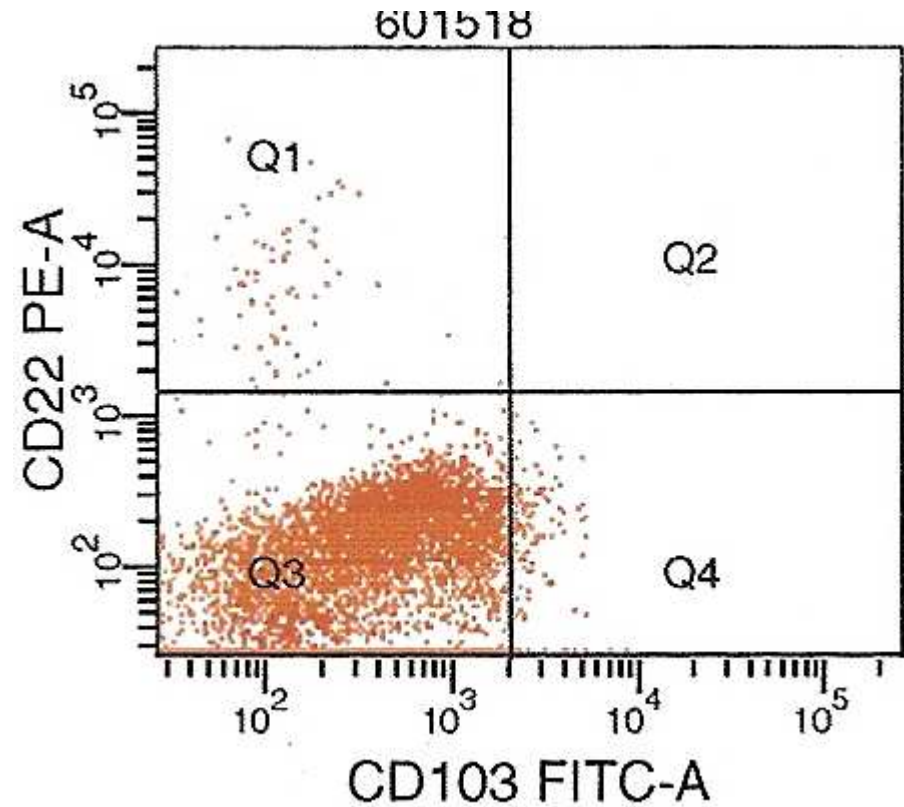
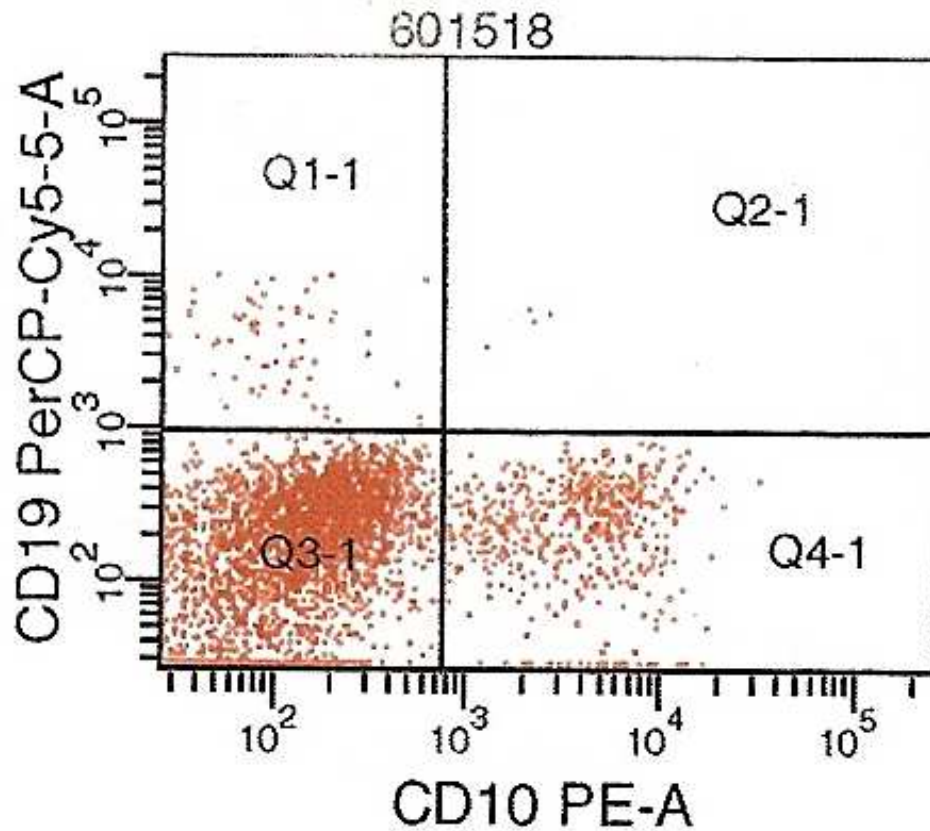
# CD19/CD10 – CD22/CD103



# CD19/CD10 – CD22/CD103

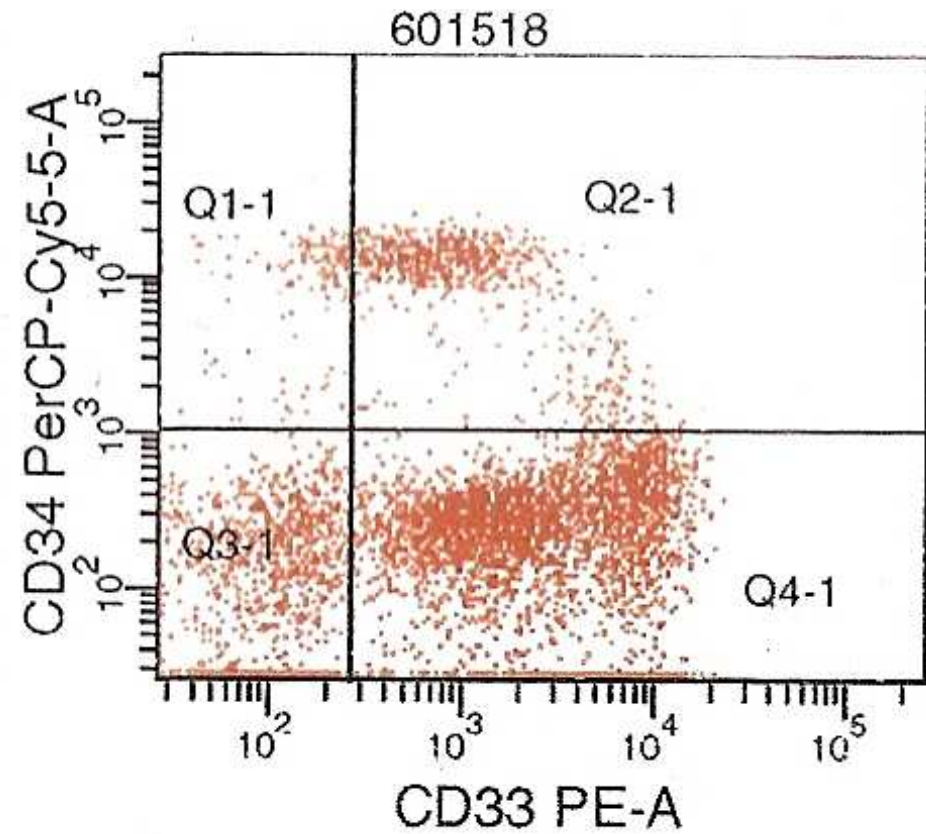
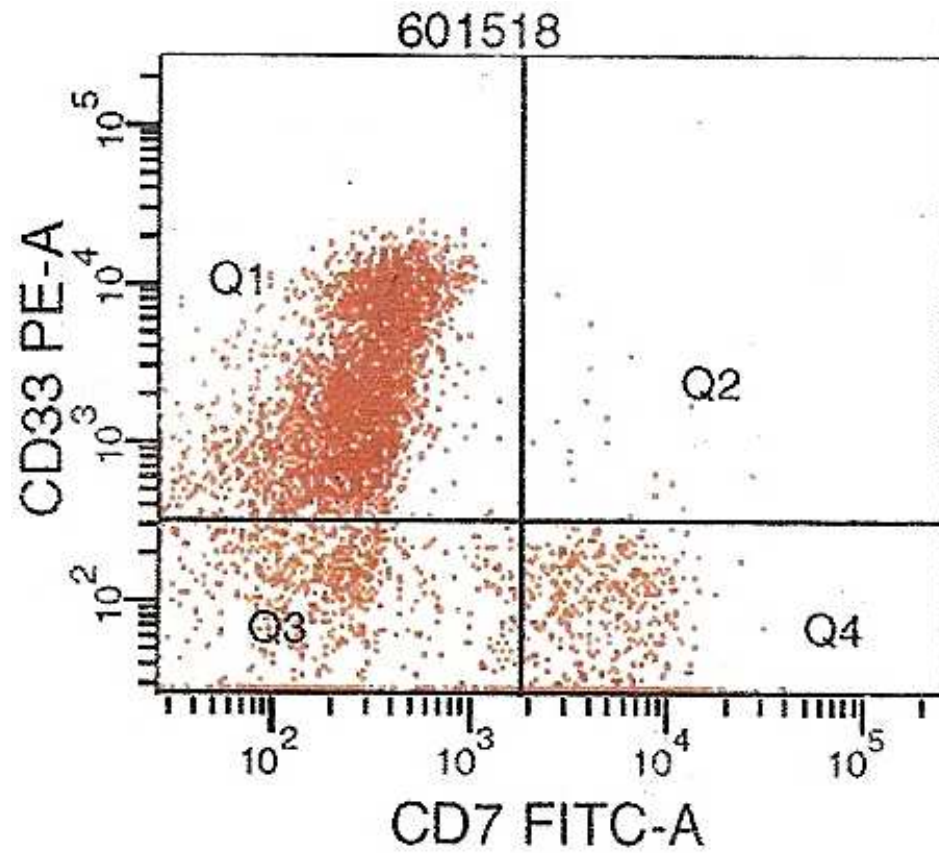
B-lymphoid markers

CD103 – Hairy Cell marker  
(HCL causes monocytopenia)



Early B-lymphoid and HC markers negative

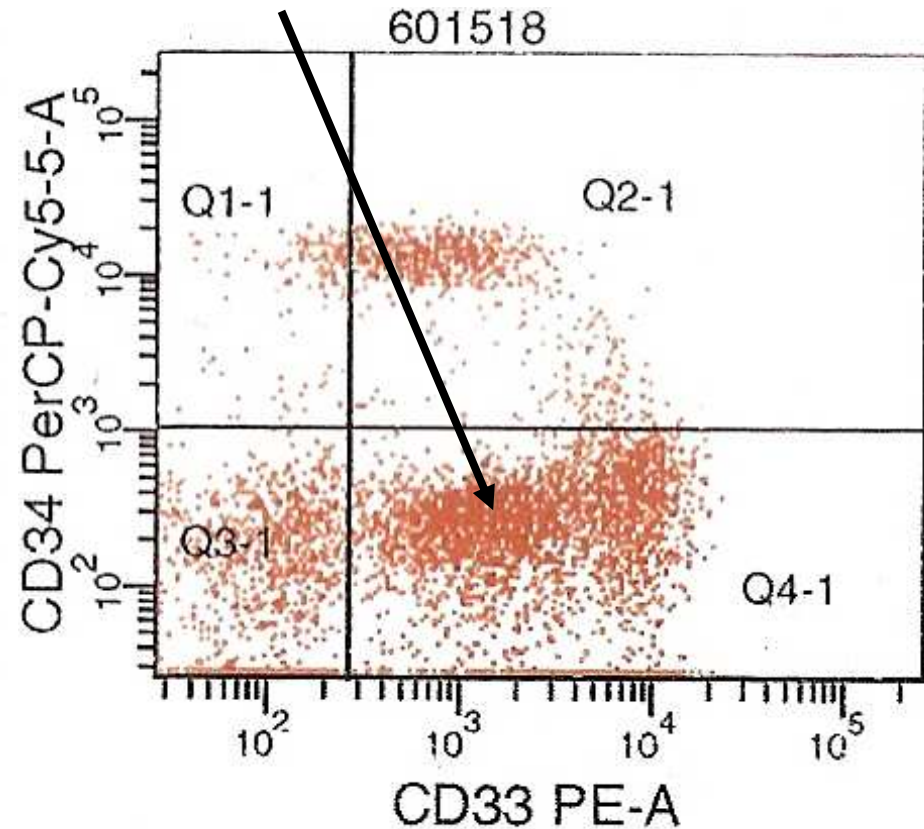
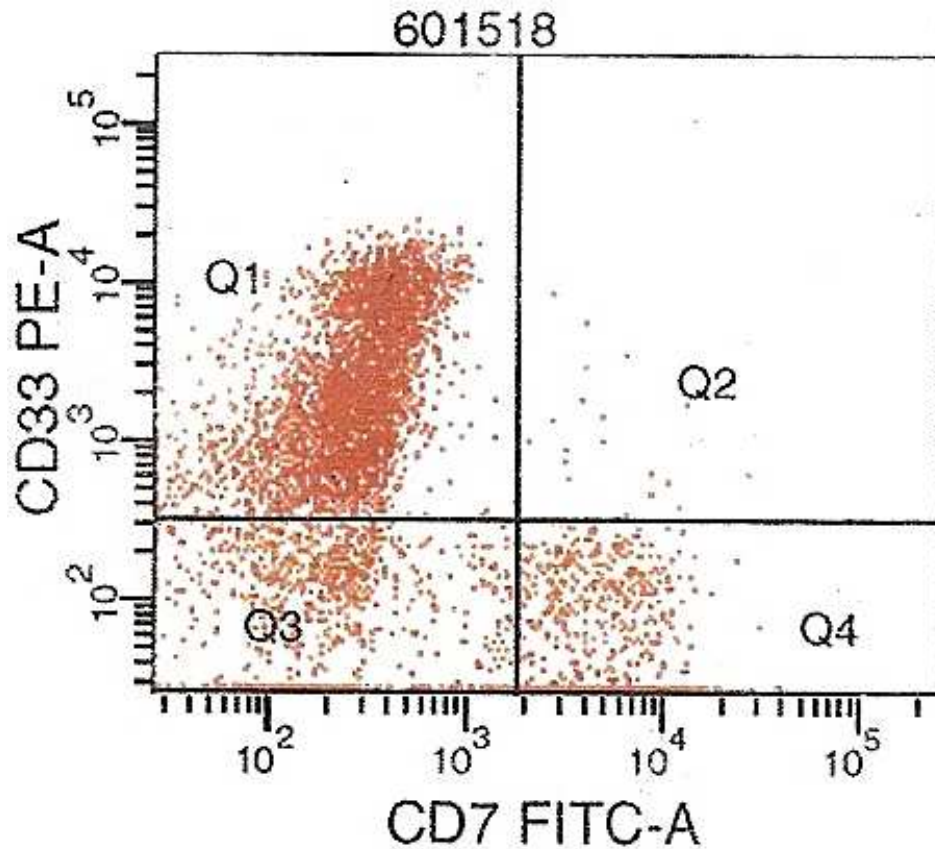
# CD33/CD7 – CD34/CD33





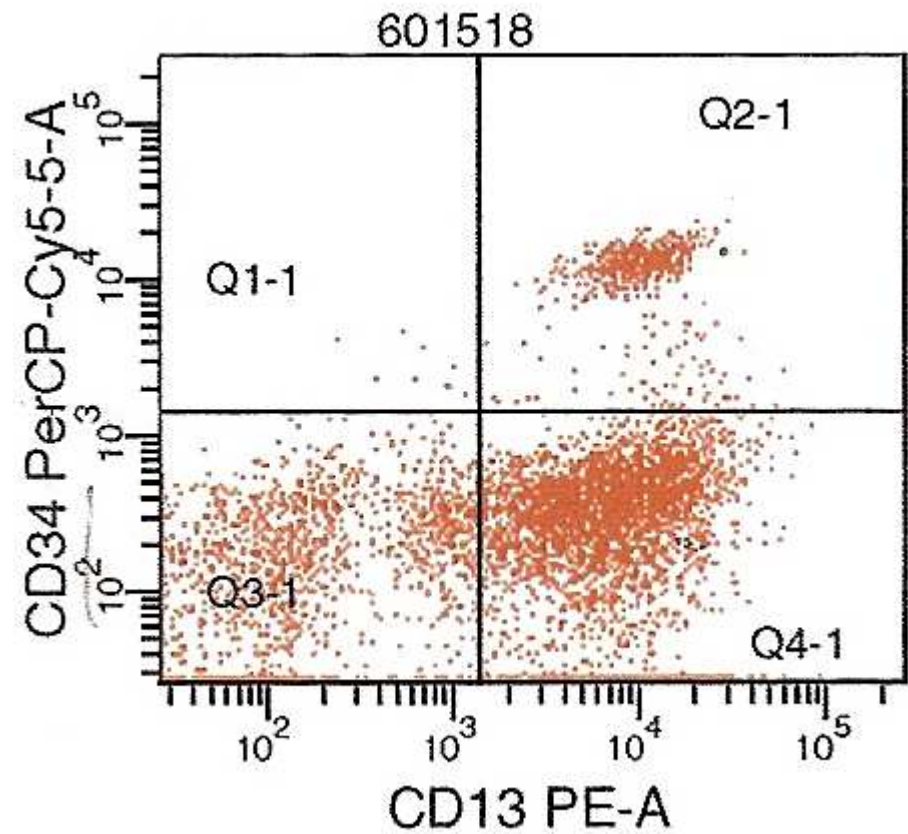
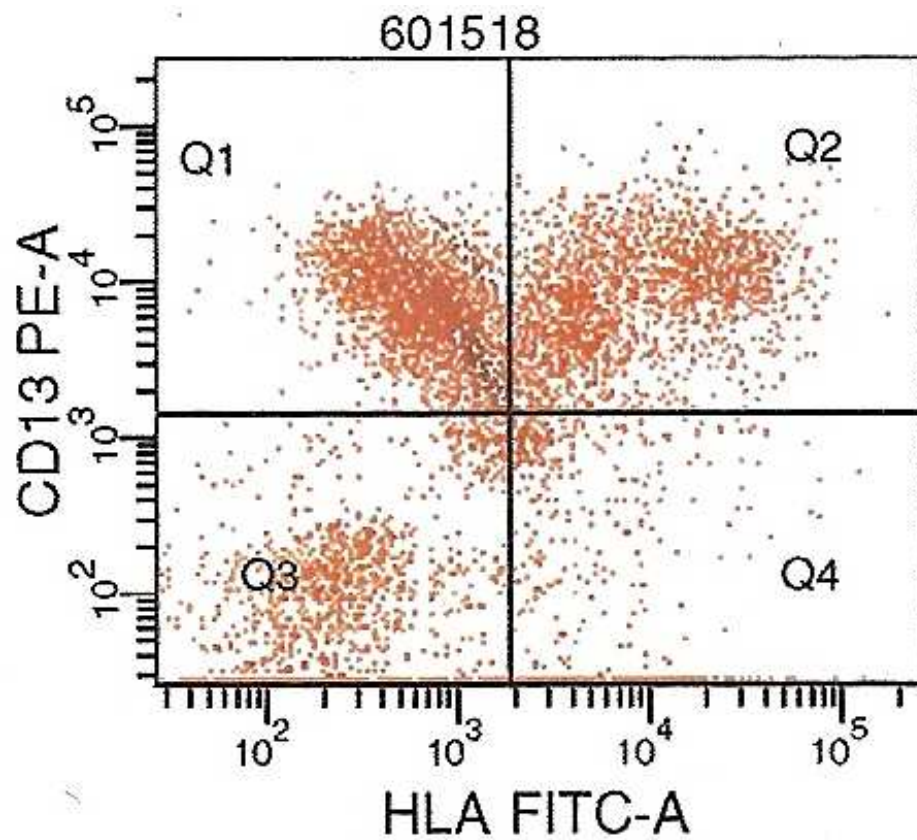
# CD33/CD7 – CD34/CD33

CD34 – immature cells CD33 – myeloid marker Leukaemic blasts or maturing myelocytes?



CD34 pos and CD33 pos cells are immature myeloid cells  
Are the CD34 neg, but CD34 pos cells leukaemic blasts?

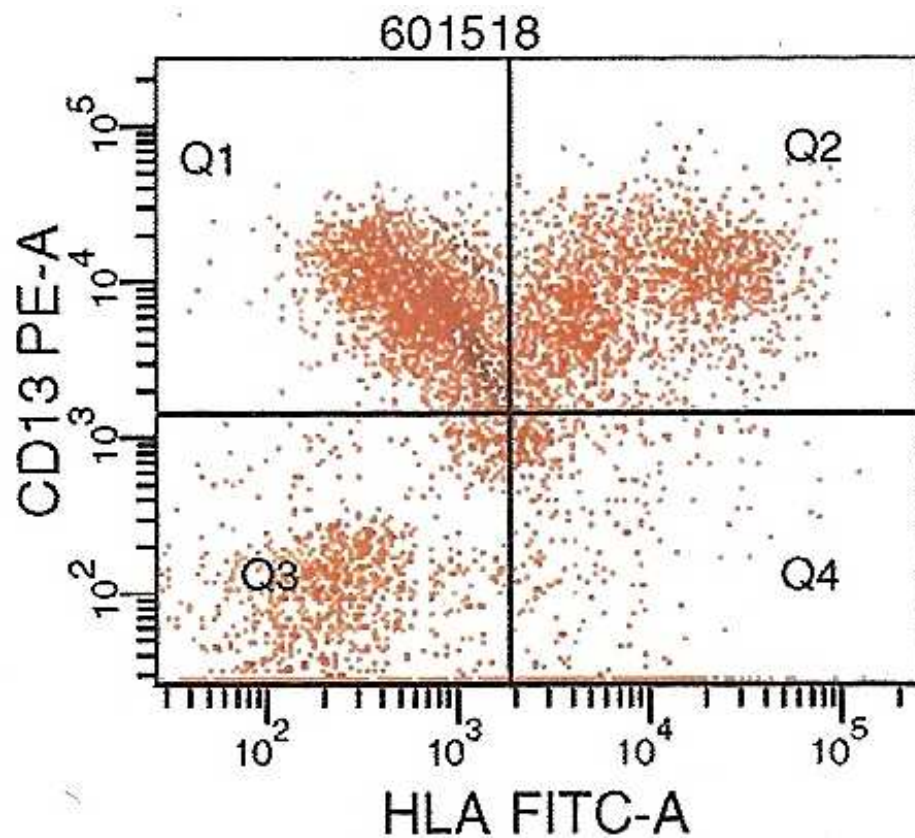
# CD13/HLA-DR – CD34/CD13



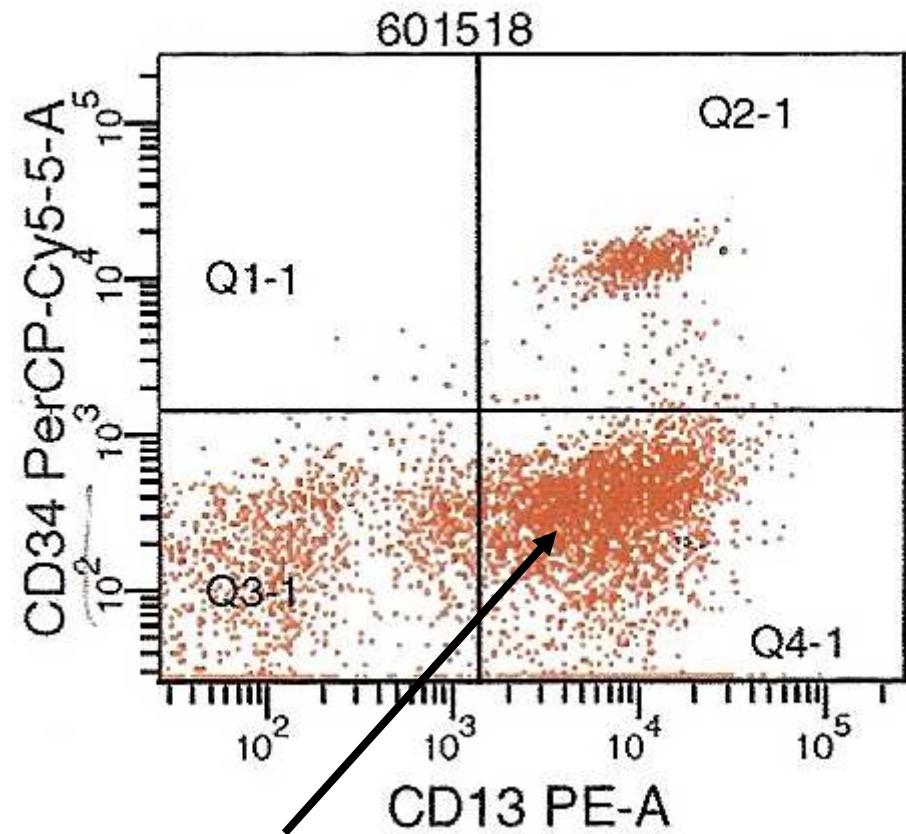
# CD13/HLA-DR – CD34/CD13

HLA – marker for immature cells

CD13 – myeloid marker of maturing cells

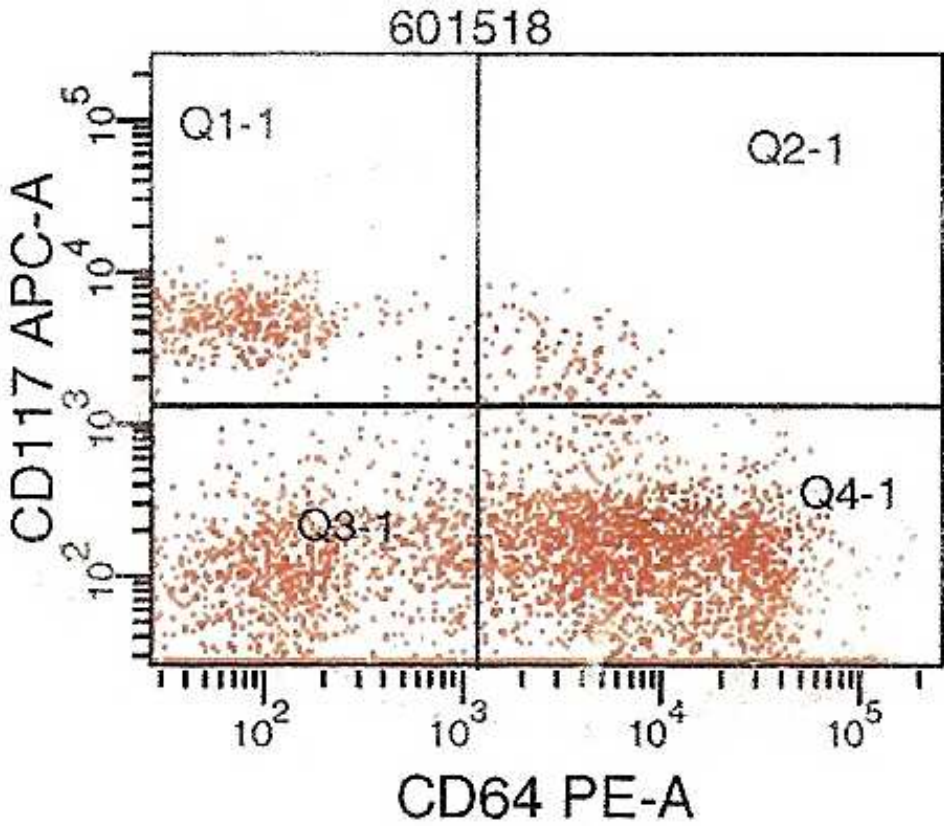
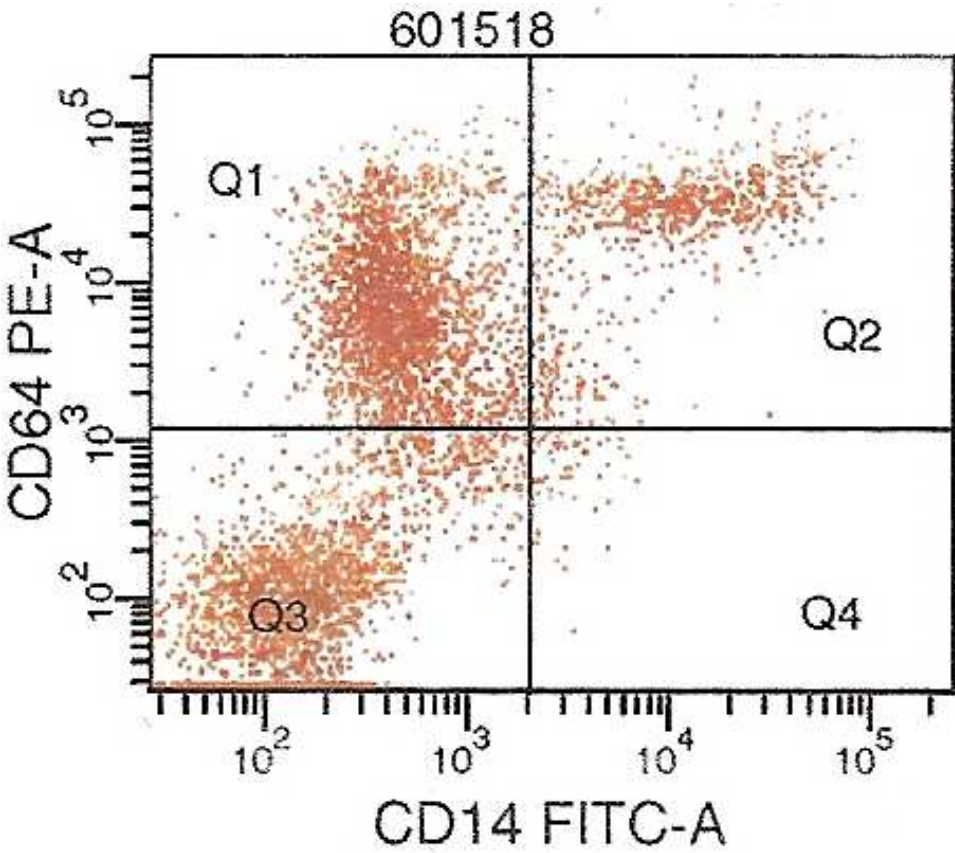


CD13 positive cells



Leukaemic blasts or maturing myelocytes?

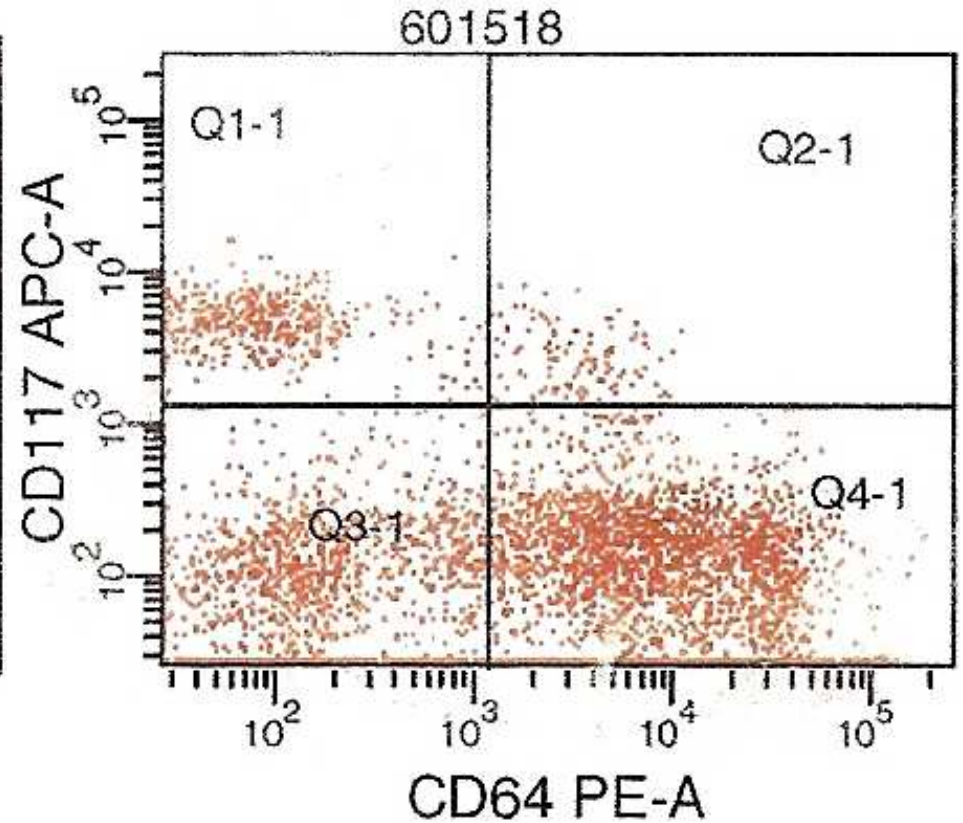
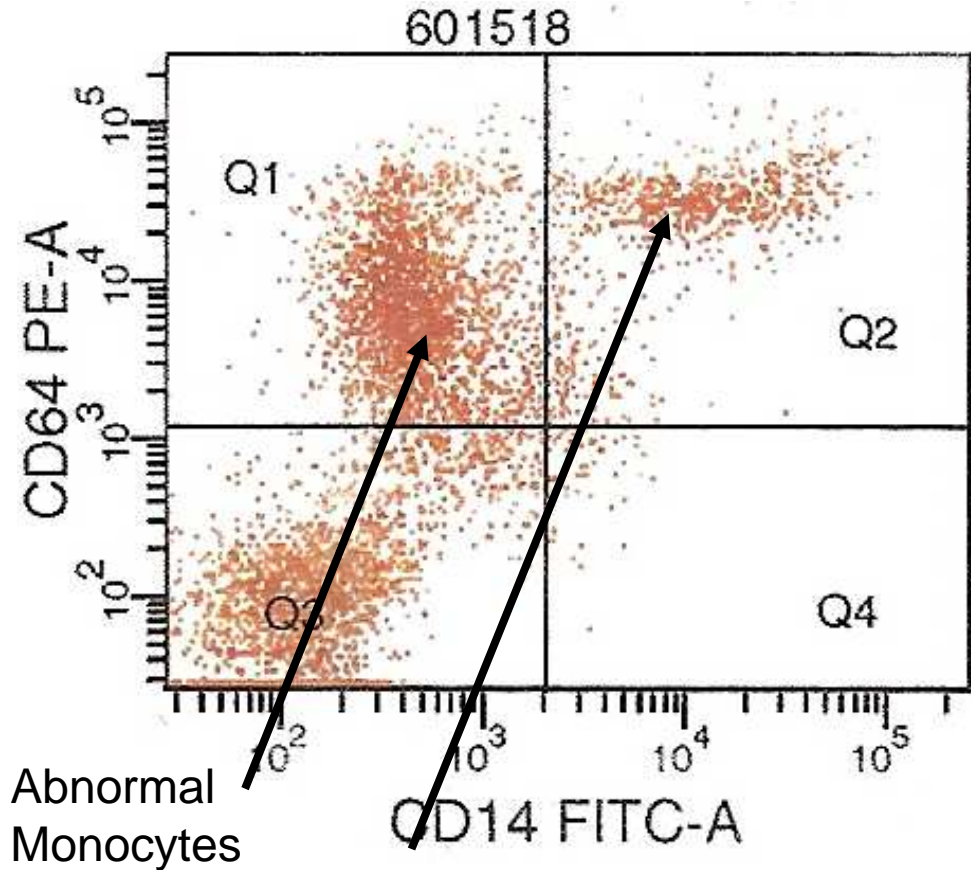
# CD64/CD14 – CD117/CD64



# CD64/CD14 – CD117/CD64

CD14 – unspecific myeloid marker  
CD64 – monocytoid differentiation

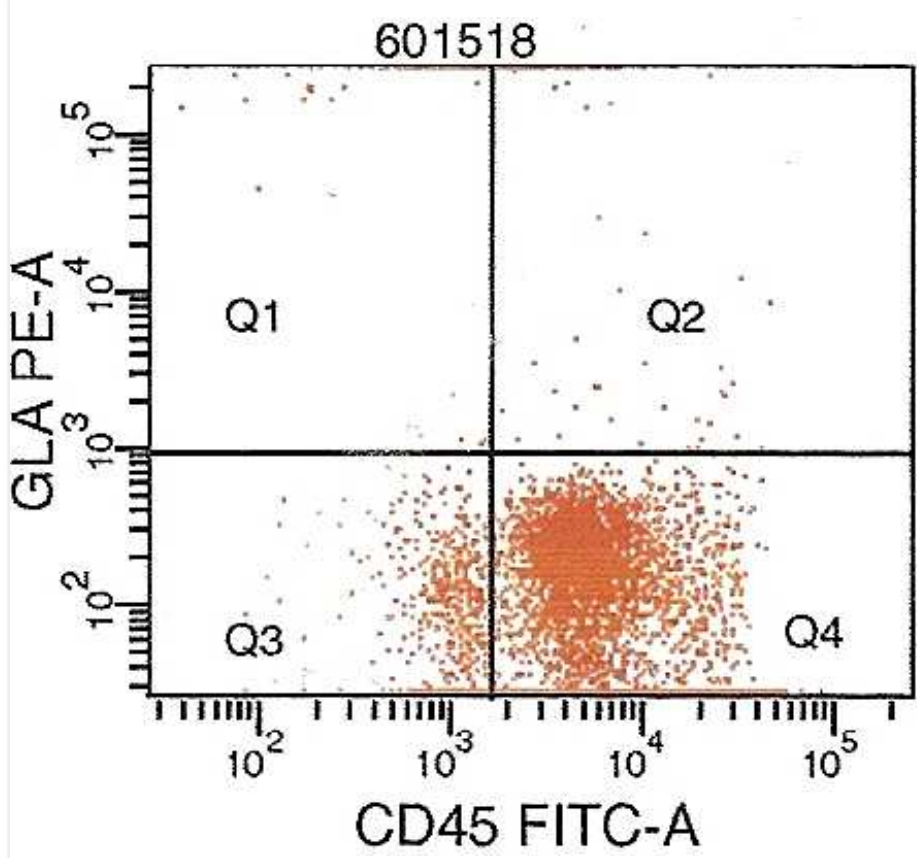
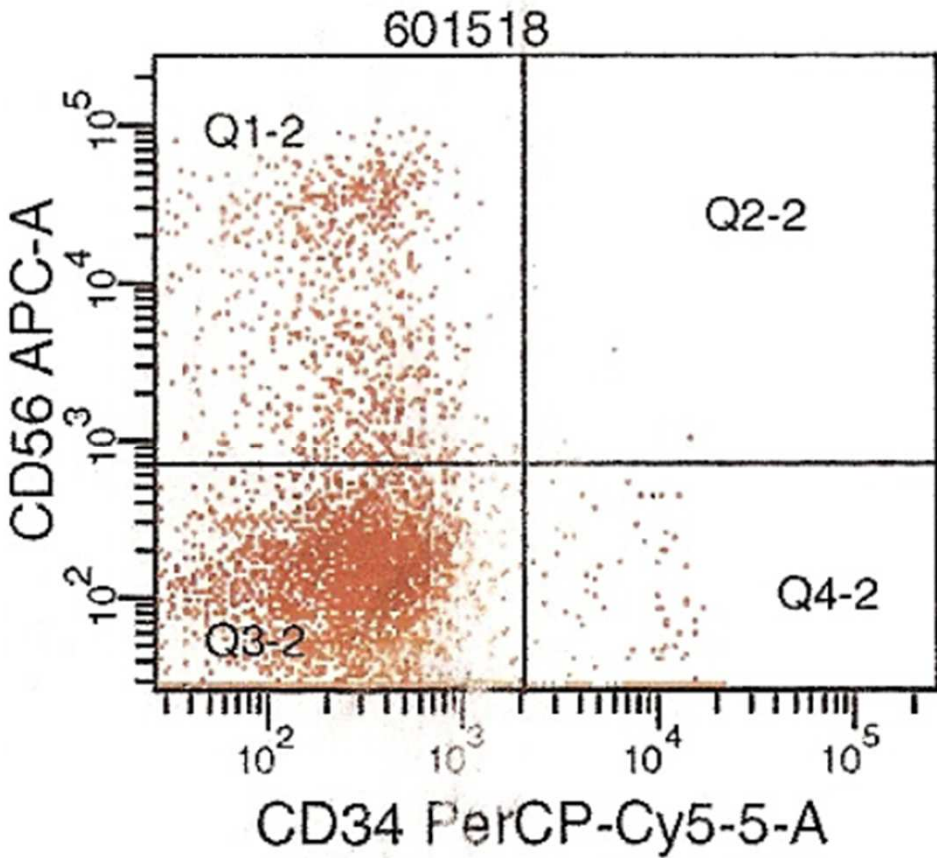
CD117 – immature cells



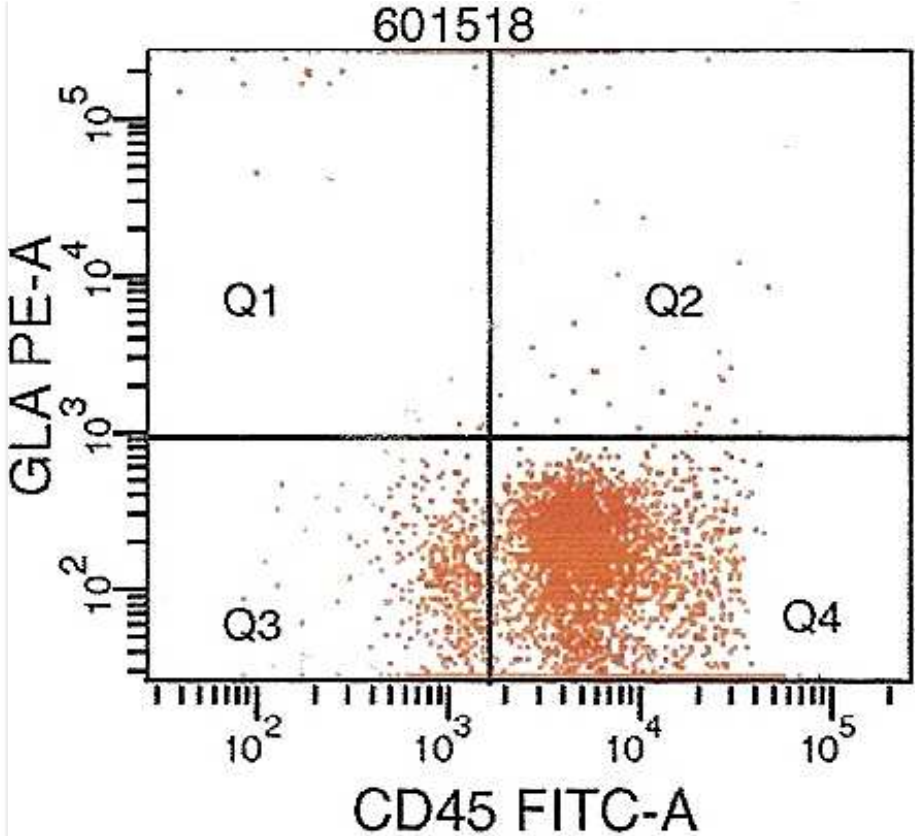
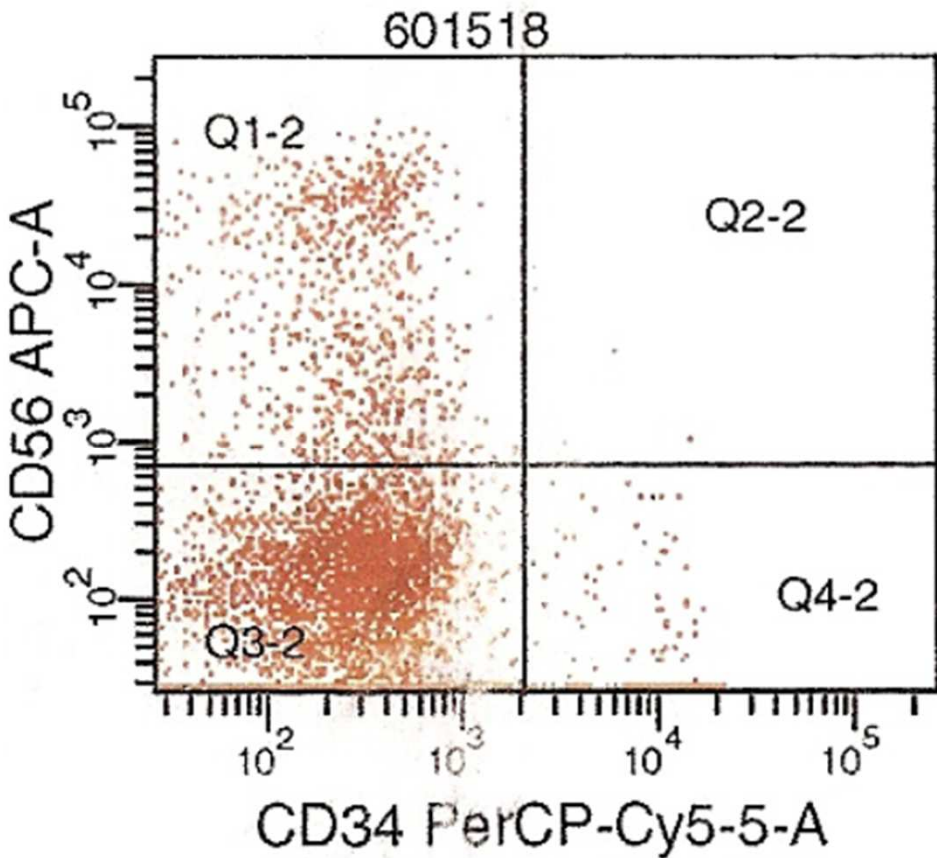
CD64/CD14 positive cells are normal monocytes

CD64 positive /CD117 negative cells

# CD34/CD56 – GL-A/CD45



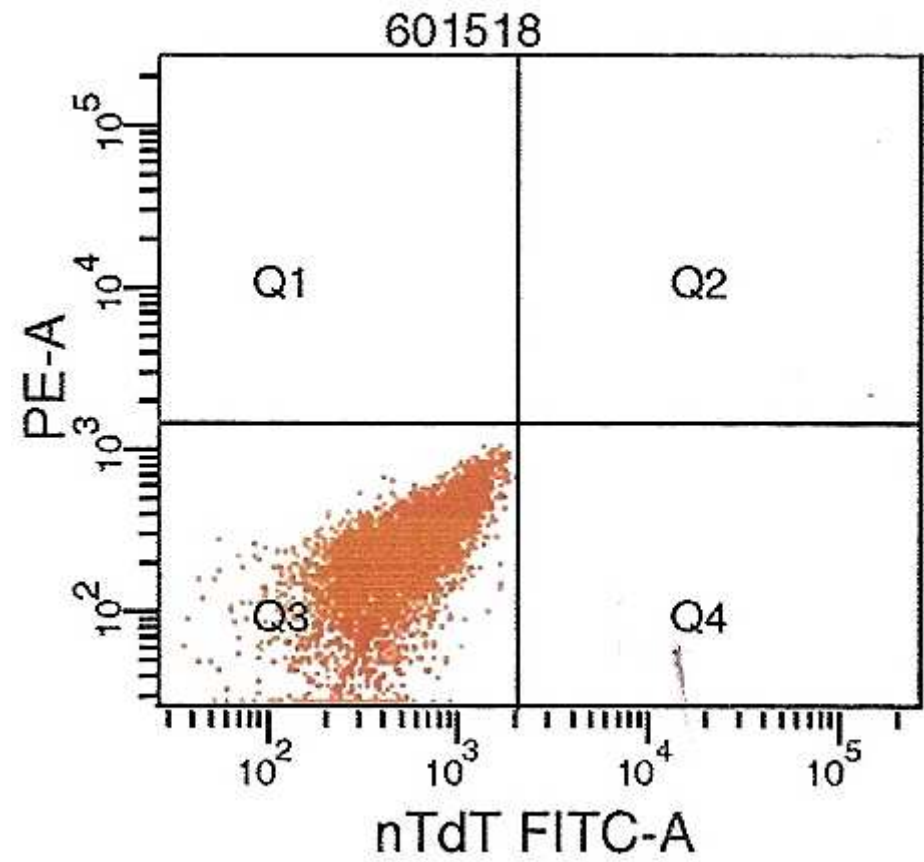
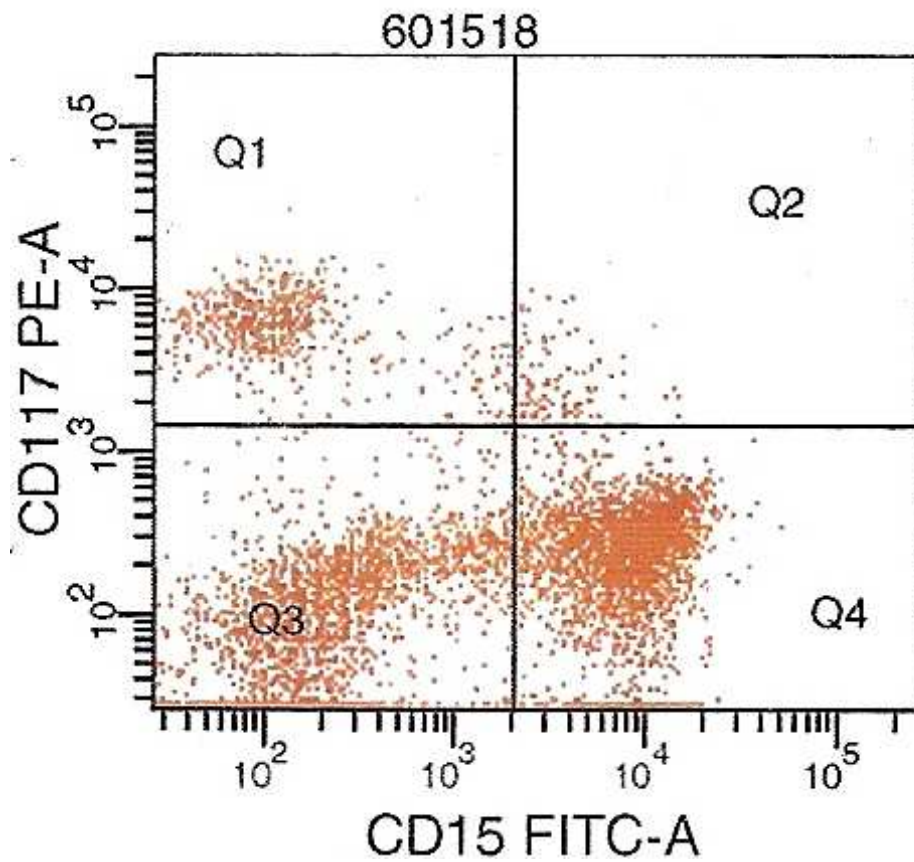
# CD34/CD56 – GL-A/CD45



Cells carry CD56

Cells are all CD45 positive and Glycophorin A negative  
– rules out a non haematopoietic tumour

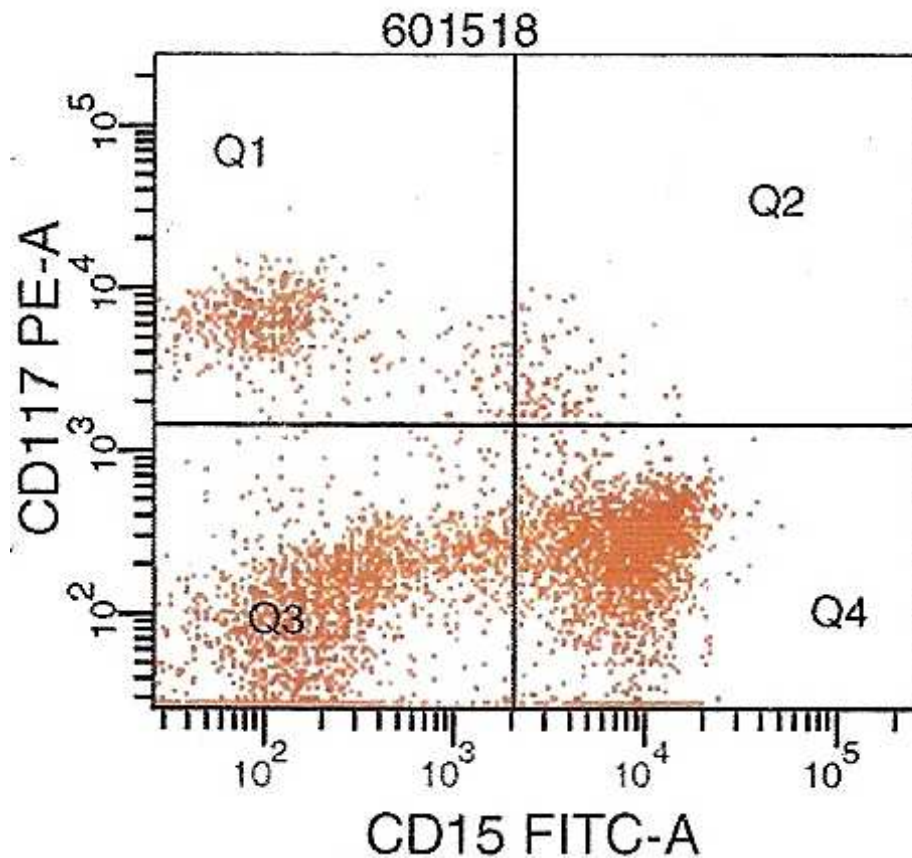
# CD117/CD15 - TdT



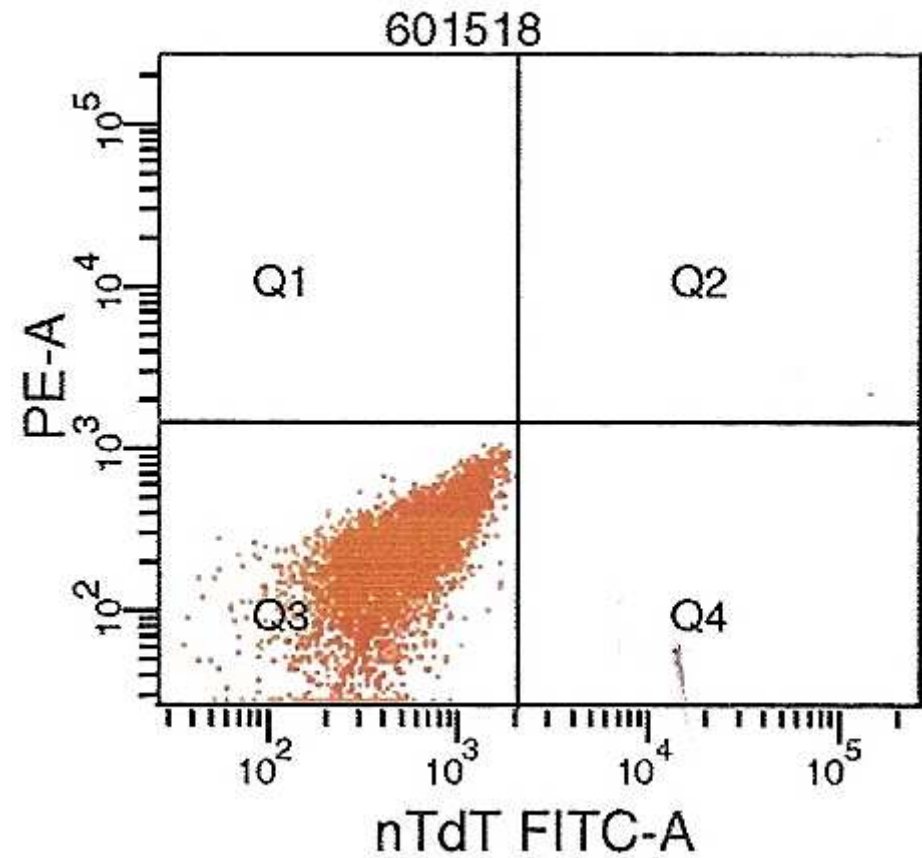


# CD117/CD15 - TdT

CD15 – mature monocytoid marker



Asynchronous expression of monocytoid marker



Cells are TdT neagive

# Flowcytometry

## T-LYMPHOID MARKERS

Cell Marker - CD2	30	%
Cell Marker - cCD3	10	%
Cell Marker - CD5	32	%
Cell Marker - CD7	13	%

## B-LYMPHOID MARKERS

Cell Marker - CD10	<1	%
Cell Marker - CD19	2	%
Cell Marker - CD20	2	%
Cell Marker - CD22	1	%
Cell Marker - cCD79a	1	%
Cell Marker - sIgM	2	%

## MYELOID MARKERS

Cell Marker - CD13	69
Cell Marker - CD14	14
Cell Marker - CD15	50
Cell Marker - CD33	72
Cell Marker - cMPO	52
Cell Marker - CD64	55
Cell Marker - Glycophorin A	5
Cell Marker - CD41A	7

## IMMATURE STEM CELL MARKERS

Cell Marker - CD117	14	%
Cell Marker - nTdT	NEG	
Cell Marker - CD34	14	%

## DOUBLE CELL MARKERS

Cell Marker - CD7:CD33	<1	%
------------------------	----	---

## OTHERS

Cell Marker - CD45	86	%
--------------------	----	---

---

Cell Marker - HLA-DR	41	%
----------------------	----	---

---

# Conclusion

- Poorly differentiated acute myeloid leukaemia with monocytoid features:
  - CD34 negative
  - expresses CD15, CD56 and lysozyme
  - aberrant expression of CD14 and CD64
  - with skin and organ infiltration