

Questions that target severity

- How itchy is your child?
- Does eczema cause your child to wake at night?
- Does their skin ever bleed or ooze/weep?
- Are they able to do all activities at school?

- "POEM" score for eczema

Assessing Severity

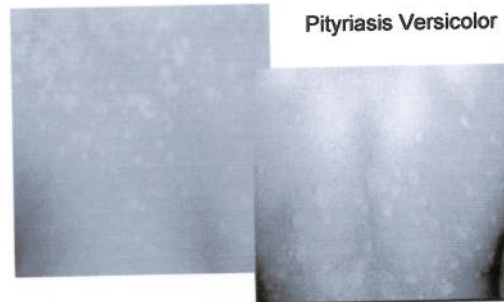
- Visual analogue scales (0-10) to assess itch and sleep loss in last 3 days
- Children's Dermatology Life Quality Index
- Infant's Dermatitis Quality of Life Index
- POEM score

Eczema phenotypes



- Pityriasis Alba
- Partial loss of pigmentation at areas of eczema
- 35-44% of AD patients
- Peak onset 6-12 years
- Face, neck, upper trunk

Pityriasis Versicolor



Follicular eczema



Discoid eczema

