



Curriculum Review Update

Professor Jenny Higham, Head of Undergraduate Medicine

The Curriculum Review was initiated in a series of broad and inclusive meetings convened by the Head of Undergraduate Medicine to consider both external and internal pressures on the course. This process identified a number of priorities, and working groups were set up to look at specific issues within four broad areas: Years 1 & 2, the BSc, the Clinical Years and Vertical Integration. The reports were brought back to a commissioning group. Alongside this, the GMC requirements and recommendations form the basis for the changes that are planned for implementation over the next two academic years.

The improvements being introduced aim to address issues with the balance of course content, and to review assessment and examinations. The timing and content of the BSc Foundation Course is being amended to integrate it with other elements of the course.

The course is inevitably very complex, indeed only a handful of individuals would feel confident enough to be examined in it! A project to map the learning outcomes for the course has completed its initial stages, and work continues to develop a comprehensive map illustrating how each part of the course contributes to the whole, and will be available to staff teaching on the course. Vertical and horizontal integration will be enhanced having now appointed six new Vertical Theme Heads who will work with the existing Year Heads. (See Page 3).

Three new year-specific Senior Tutors have been appointed to co-ordinate and manage student support and welfare. These posts will replace the previous part-time Head of Pastoral Care post, and will work closely with Personal Tutors. Both the Curriculum Review and these posts have cross-over responsibility for improving the pastoral care arrangements and overall student experience. (See Page 3).

Specific changes have already been identified for implementation in 2009-10 and 2010-11, but work is not over yet and the process of review will continue. Changes to the nature of healthcare delivery will also demand a response in terms of training opportunities.

Further information on the plans and progress of the review plus full details of the changes planned for introduction over the next two years are available online via: <https://education.med.imperial.ac.uk/Staff/MEN.htm>



E-learning developments

Ms Maria Toro-Troconis, Senior Learning Technologist

E-modules

Two new e-modules on Clinical Safety have been produced by Mr Amit Vats, Dr Mark Sacks and Mr Krishna Moorthy. These e-modules have been successfully embedded in Year 3 e-lecture programme 2008-2009.

Clinical Safety - Wrong Site procedures



<http://tinyurl.com/bt43o5>

Clinical Safety – Drug Error Scenario



<http://tinyurl.com/cqlele>

Education day 2008: From strategy to action

Three posters were presented at the Education Day 2008. The posters can be downloaded from the links below.

Clinical e-Lecture Programmes at Imperial College London

<http://tinyurl.com/d9ynff>

The Imperial Virtual Patient Application

<http://tinyurl.com/b5lh9d>

Game-based learning for Virtual Patients in Second Life

<http://tinyurl.com/almhnb>

E-learning Publications (2008-2009)

Our latest e-learning publications can be accessed from our e-learning website at: <http://tinyurl.com/auackg>

For more information please email us at: webmaster.umo@imperial.ac.uk or visit our website: <http://www.elearningimperial.com/>

SLurl: <http://tinyurl.com/ajybu5>

Seeking more excellence

We are currently seeking nominations for the 2008-09 awards. Ten awards are made annually, which are open to NHS-salaried staff who our teach medical undergraduates. We welcome nominations for the Awards from the four main teaching hospitals, the district general hospitals, the mental health trusts and the primary care trusts or practices.

The successful nominees will receive awards based on the extent of the teaching commitment shown, evidence of a significant contribution to the organisation of the course, and any innovations to the teaching programme or exceptional practice shown. Nomination for an award may be made by the individual themselves, their colleagues at work, or by one or more medical student.

The relevant forms are available for download from <https://education.med.imperial.ac.uk/Staff/MEN.htm> and should be sent to the relevant Director of Clinical Studies (DCS) by 30 April 2009. These awards have been very well received since their inception six years ago.



Question Bank Project Update

Mr. Tom Mole
Examination Question Bank Project Manager

After six months of development the Question Bank is well under-way. Now that the structure of the Bank has been finalised and put in place, the work of populating it with good quality multiple choice questions has started in earnest. Whilst still comparatively small the Bank is growing rapidly with several question writing sessions having already taken place.

With increasing participation the Bank is growing into a valuable resource. The Bank is already being used to set exam papers for the clinical years of the course and in the next six months that will extend to the pre-clinical years. Furthermore, with the expansion of the Bank the effective mapping of assessment to the curriculum is evident. In the future this will tie in with Dr James Warner's Learning Outcomes Project to allow for blueprinting of exams.

Anyone interested in contributing questions to the Bank, arranging question writing sessions, or finding out more about the Bank and what it has to offer, please contact Tom Mole t.mole@imperial.ac.uk



GPs—would you like a twin?

Dr Sue Smith, Assistant Admissions Tutor

Are you a GP? If so, you probably get requests from local school students for work experience in order to strengthen their applications to medical school. If you have contributed to one of our interview panels, you will know how much emphasis is placed on this aspect of the personal statement. However, whilst your practice might be willing to host the occasional school student for a few days, you are probably concerned about being overwhelmed with requests if the news gets out that your surgery is 'work experience-friendly'.

One solution to this is twin your practice with a single school, since any one school is only likely to have a handful of putative medical students per year. We have trialled a pilot project which worked well for both school and practice and we would now like to roll this out further. We can offer a twinning service, whereby we will link your practice with a school in our widening participation programme. The school chosen will be one which is located at some distance from the partner practice, so pupils are unlikely to be, or to know, patients registered at that surgery. We can also make life a little easier by suggesting draft agreements so both practice and school are clear from the outset about what a surgery will offer and what standards of behaviour it will expect from participants. For more information, contact Sue Smith (sue.smith@imperial.ac.uk), in the Admissions team.

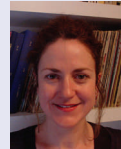
New Appointments

We are very pleased to announce the following new appointments:

Vertical Theme Heads

Improving the Student Experience

Dr Jonathan Hoare

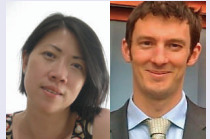


Technical and Clinical Competencies, Preparation for Practise and Patient Safety

Dr Carolyn Gabriel

Ethics, Professionalism, Leadership and Management

Dr Wing May Kong (deputy Mr Colin Bicknell)

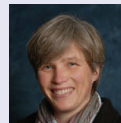


Patient Centred Education and Communication

Dr Elizabeth Muir and Dr Adrian Raby

Scientific Method and Evidence Based Medicine for Clinical Practice

Dr Stephen Robinson



Research for Scientific Advancement of Medicine: The Clinician Scientist

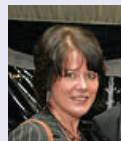
Dr Alison McGregor

Senior Tutors

(with effect from 7 April 2009):

MBBS/BSc Years 1 and 2 (Early Years)

Dr Mike Emerson



MBBS/BSc Year 4 and Graduate Entry and other BSc's (Biomedical Science and Pharmacology)

Professor Terry Tetley

MBBS/BSc Years 3, 5 and 6 (Clinical Years)

Dr Mike Schachter (Dr Schachter will also be the Faculty Senior Tutor with overall responsibility for the tutoring system)



Senior Assistant Faculty Operating Officer (Education)

Ms Susan English, who many of you will know as the Manager of North West Thames Foundation School (NWTFs), has been appointed as Senior Assistant Faculty Operating Officer (Education), in succession to Mr Richard Barnard. Sue will take up her post on the 6 April 2009, we are actively seeking her replacement in the NWTFs.



To Teach is to Learn

Edwina Brown, Professor of Renal Medicine

The importance of multi-professional working for clinical care, research and teaching was the principal theme of my inaugural lecture 'To Teach is to Learn'. This focused on how teaching and research can improve clinical practice. We teach our students to deliver patient-centred care, yet they will still see a more paternalistic style being practised in many instances with patients not always being given choice, or their own wishes being asked about, particularly for end of life issues. We can only change such practice with research showing that patient outcomes and quality of life can be improved by enabling choice, and with education. Indeed, I am delighted, that since this lecture, we will be in-

roducing a palliative care module for the new Direct Entry/Graduate Entry firm at Charing Cross in September. If this is successful, this can be extended to other sites in subsequent years.



Left to right— Professors Pusey and Brown

The Annual Faculty of Medicine Teaching Forum

This year the former Clinical Teaching forum is being expanded to extend an invitation to all colleagues across the Faculty. This is in recognition of the continuing integration of science and clinical aspects of the undergraduate course. A packed afternoon will include:

Dr Ben Goldacre, author of the Guardian's Bad Science column (and book of the same name) and bane of celebrity health quacks.

Teaching skills master classes – improve your teaching techniques.

Vertical Themes in Learning – How well do you know what is taught?

Learn about teaching innovations across the faculty. And (as they say) much, much more...

**Wednesday 29 April 2009 Glenister Lecture Theatre
Charing Cross Campus, between 12.45 – 5.15
(Lunch will be provided from 12.45)**

Please contact Mrs Evelyn Rouse, on 020 7594 1616, or via email on: e.rouse@imperial.ac.uk, if you are interested in attending. Places are available on a first come, first served basis.



Graduate Entry Programme Update

Professor Anthony Warrens, Head of Graduate Entry Programme

2008 saw the launch of the exciting new Graduate-Entry MBBS Programme (GEP). The culmination of 4 years' development and accreditation, it aims to attract excellent life-science graduates into medicine. On this course, students spend Year One on an accelerated programme based in the new state-of-the-art Wolfson Education Centre, at the Hammersmith Campus. The course is tailored to build on the skills and knowledge students attained during their first degree. After this year, GEP students join the third year of the Undergraduate-Entry Medicine course for three further years.

Students were attracted by the strong emphasis on integrated modular learning and early clinical experience - they meet patients in their first term. Anatomy and Cardiovascular modules were early favourites: the Anatomy module is a completely new and innovative course integrating the traditional elements of living anatomy & examination of cadaveric specimens with demonstrations of normal anatomy from different imaging modalities. In Cardiology, Professor Nick Peters found students showed such an interest in cardiac electrophysiology that "demand out-stripped supply" for places on an extra-curricular clinical visit. While not without its gremlins, the course has got off to a good start and we have an even larger number of applicants for next year!



Student Viewpoint—a welfare web page

Kathryn Wright, ICSMSU Welfare Officer

We are currently in the process of developing a brand new interactive welfare and student services page. The page is designed to pull together all of the welfare advice and contacts that are spread over several sites and amalgamate them into one interactive, easy to use and comprehensive site accessible through the intranet and the SU websites.

Once you have signed in the page, it will recognise who you are and tailor itself to you needs; informing you who your tutor and education reps are and who in the medical school and student union are there to represent you.

The page will be set out as a spider diagram with the central question of "what is the problem?" leading off from this will be various topics such as health, finance and education amongst others. Within each topic common issues will be addressed, offering the viewer advice on how to manage the problem as well as offering them advice on who to contact either within the medical school or outside of it. The new site is aimed to improve awareness of and access to college support currently available.

Medical Education News is produced by the Undergraduate Medicine Office for staff of the Faculty and associated Trusts. We would welcome any articles for publication on your latest medical education news. If you would like to contribute something to the next edition of the newsletter please contact Mr Paul Ratcliffe, Quality Assurance and Enhancement Manager, via email on p.ratcliffe@imperial.ac.uk or via telephone on: 020 7594 9819.

Online: <https://education.med.imperial.ac.uk/Staff/MEN.htm>

© Undergraduate Medicine Office, Faculty of Medicine, Imperial College London, 2009.