

## MODULE S4 – COMPLETING A QUIZ

Quizzes are a form of assessment.

- Select **Assessment** from the Course Tools list on the left hand side of the screen. Figure 1.
- You will see the assessments that are currently available for you to complete. Click on the **title** to start the assessment. Figure 2.
- Before you start the assessment you will see a screen which tells you about the conditions for attempting the assessment – if you have a limited amount of time, how many attempts you can make, the total score for the quiz etc. Precisely what you see here will depend on how your tutor has set up the quiz in the first place. Click **Begin Assessment** to start the Quiz. Figure 3.

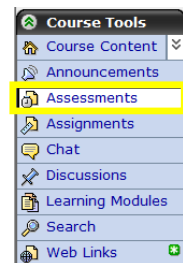


Figure 1



Figure 2

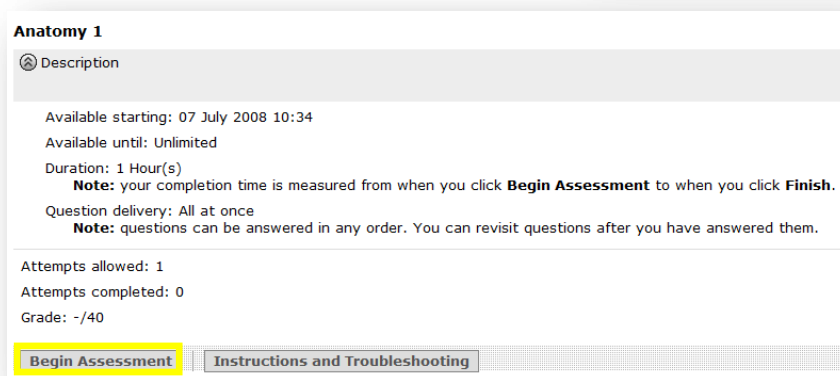


Figure 3

- The assessment window contains information about the progress of the quiz as well as the questions that you need to answer (Figure 4):
- **Time** – the current time, how much time has been allowed for you to complete the quiz and how much time you have remaining.
- **Question States** – which questions are unanswered, answered but not saved or answered and saved.
- The questions can be of different types which may include:
  - Short answer
  - Calculated
  - Multiple choice
  - True/False
  - Matching

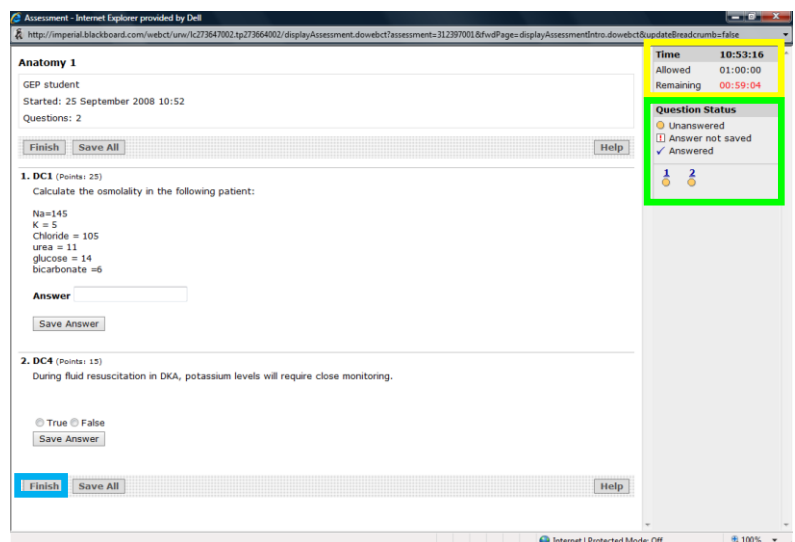


Figure 4

- When you have completed a question you can save each individual answer as you go along or you can save them all when you have finished. Some quizzes may be set up to allow you to go back and change answers or to complete the questions in any order; other quizzes may insist that you complete

the questions in a particular order and that you cannot revisit earlier questions or change your answers.

- When you have completed the quiz click the **Finish** button (Figure 4). You will be asked to confirm that you wish to submit your assessment, if you are sure you wish to finish then click the **OK** button. Figure 5.
- You will receive an on-screen message to confirm your successful submission of your assessment. Click **OK** to be taken back to the Assessment window. Figure 6.
- The point at which you can see your results will depend on the way your tutor has set up the assessment in the first place. In some cases you may get results immediately, in other cases the results may not be released until a particular time/date has been reached. Click **View All Submissions** to see the current status of your assessments. Figures 7 & 8.

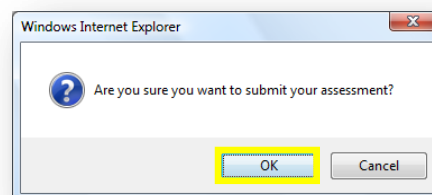


Figure 5

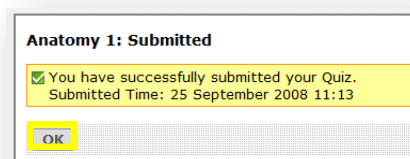


Figure 6



Figure 7

**View All Submissions**

**Anatomy 1**  
Grade - / 40 The grade displayed is the First of your attempts.

Attempt	Status	Score	Time
Attempt 1	Graded	Not released	<a href="#">00:21:06</a>

Figure 8